

**Iluka Resources Limited**

**Wimmera Project – Community Information Session #2 (online)**

**24 March 2021**

Marcus Little, Environmental Approvals Lead

# About Iluka

---

ASX-listed (ILU) mineral sands resources company

---

~\$4bn market capitalization

---

Over 60 years industry experience

---

Largest producer of zircon

---

Leading producer of high-grade titanium dioxide feedstocks

- rutile and synthetic rutile

---

Operations in Australia and Sierra Leone

---

Projects in Australia, Sierra Leone and Sri Lanka

---

Global marketing presence

---

Balance sheet strength – net cash position (no debt)

---

Industry leading sustainability credentials

---

**United States**  
Rehabilitation

**Sierra Leone**  
Sierra Rutile Operations  
Lanti and Gangama expansion projects  
Sembehun project

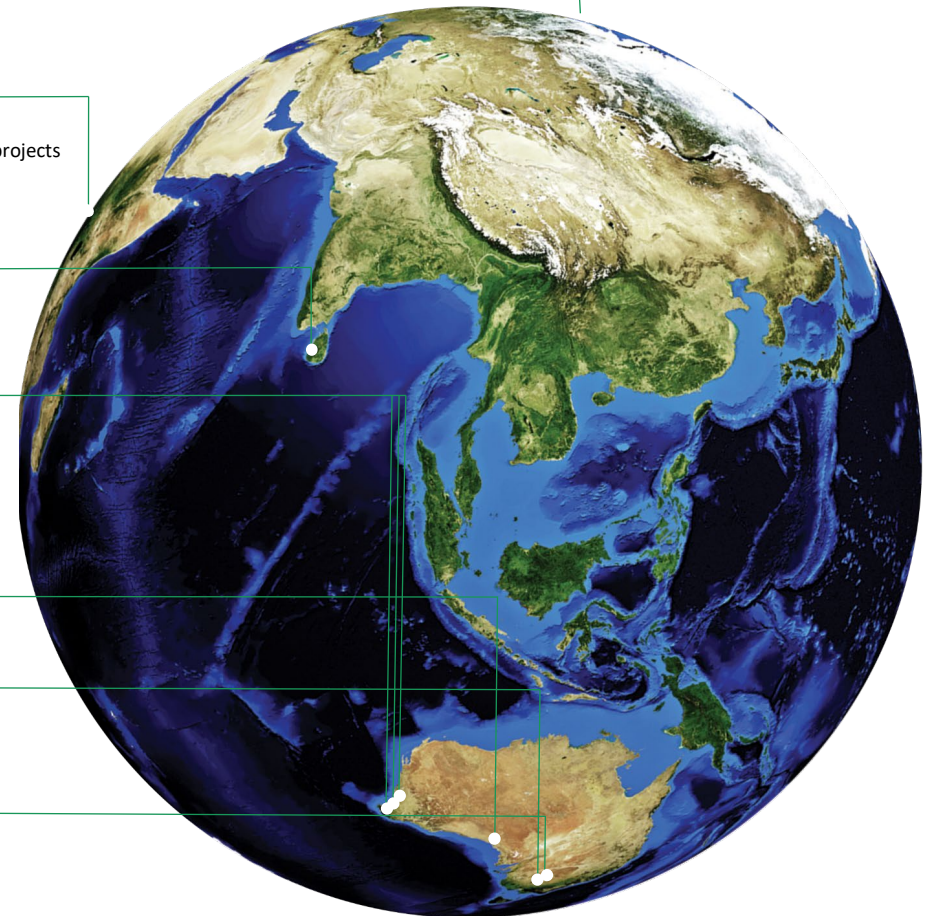
**Sri Lanka**  
Puttalam Project

**Western Australia**  
Narngulu processing operations  
Cataby project  
Capel synthetic rutile kilns  
Corporate support centre

**South Australia**  
Jacinth-Ambrosia

**Victoria**  
Fine minerals project

**New South Wales**  
Balranald project



# Iluka in Victoria

## Over A\$1 billion invested since 2005

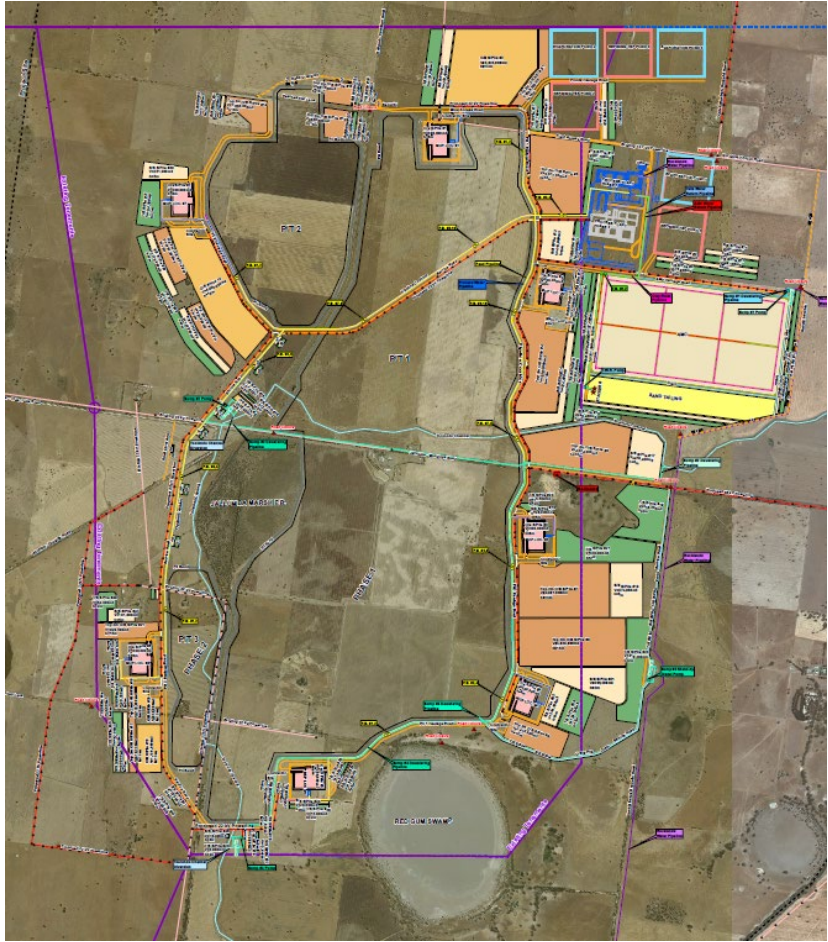
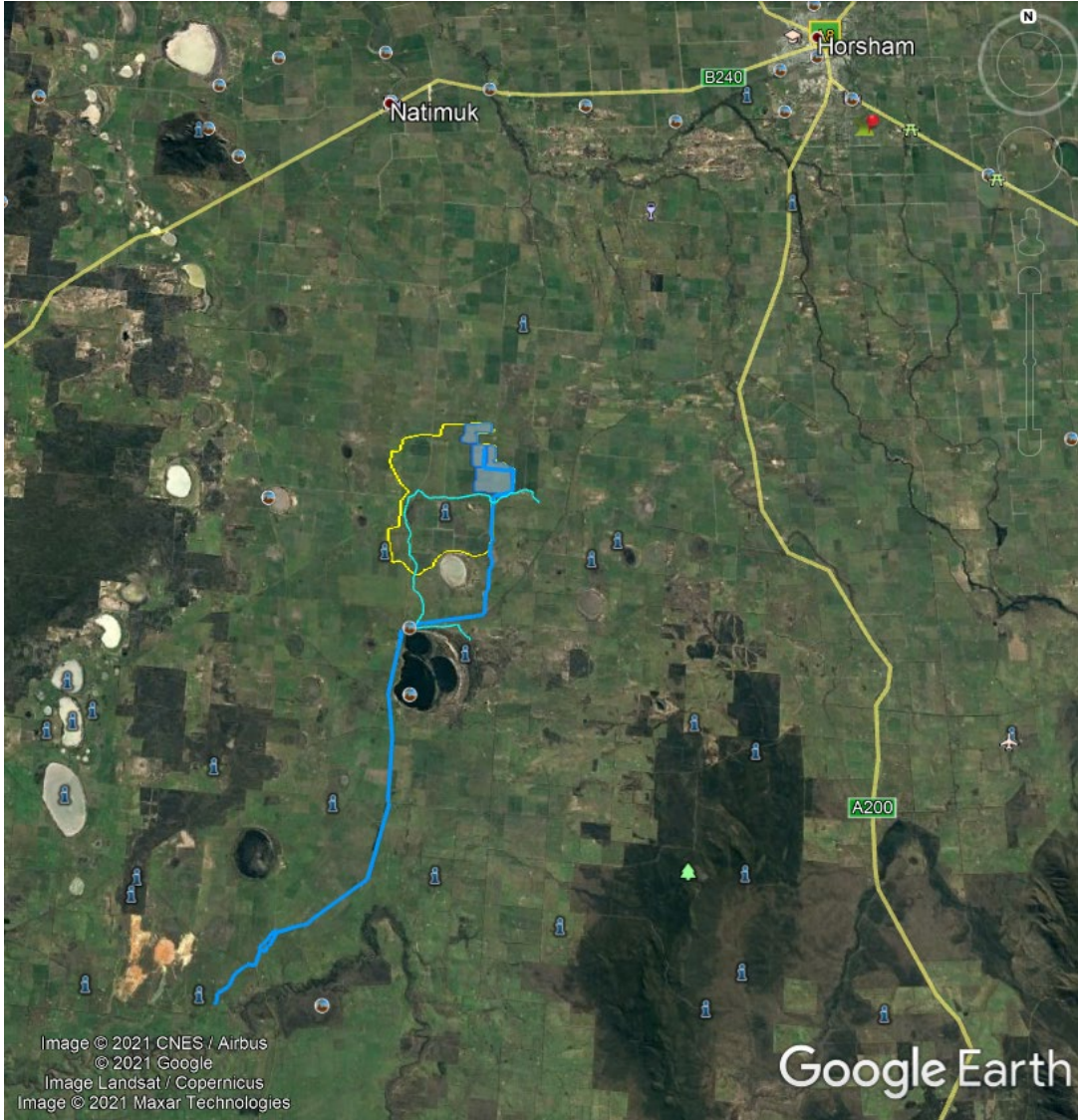
2005	Mining commences at Douglas, near Horsham
2007	Mineral separation plant at Hamilton constructed
2009	Mining commences at Kulwin, near Ouyen
2012	Mining commences at WRP, near Ouyen Rail loading facility at Hopetoun commissioned Mining ceases at Douglas and Kulwin (ongoing rehabilitation)
2013	Pre-feasibility study completed for Balranald (NSW)
2015	Mining ceases at WRP (ongoing rehabilitation)
2016	Definitive feasibility study for Balranald ongoing
2017	Hamilton plant placed into care and maintenance
2018	Pre-feasibility study commences for Wimmera Project, near Horsham



Douglas rehabilitation, Victoria

# Wimmerera Project – where is it?

Project site (centre) located ~32km south-west of Horsham, 7km north of Toolondo



Douglas rehabilitation, Victoria

# Wimmera Project – what is it?

## Potentially significant evolution for the Australian resources sector

---

Project encompasses

- conventional mine development (ore body shallow to surface)
- innovative mineral recovery processes
- a new **mineral refinery**, using chemical processes for purification and value addition
- supporting infrastructure, including engineered facilities for the safe and environmentally-sound disposal of waste



---

Mine life of WIM 100 estimated at 20 - 25 years (similar to Iluka's other nearby WIM-style tenements)

- domestic value additive processing – substantial step towards advanced mineral manufacturing

---

Key source of zircon, with Iluka to produce downstream ceramic-use product

---

Viable stream of rare earths with Iluka to produce a refined rare earth product suite

- regarded as 'strategic mineral'; subject of bilateral agreement between Australia and United States
- key element of Commonwealth Government's Critical Minerals Strategy



Wimmera Project Test Pit, Victoria



ILUKA

# Wimmera Project - timeline to date

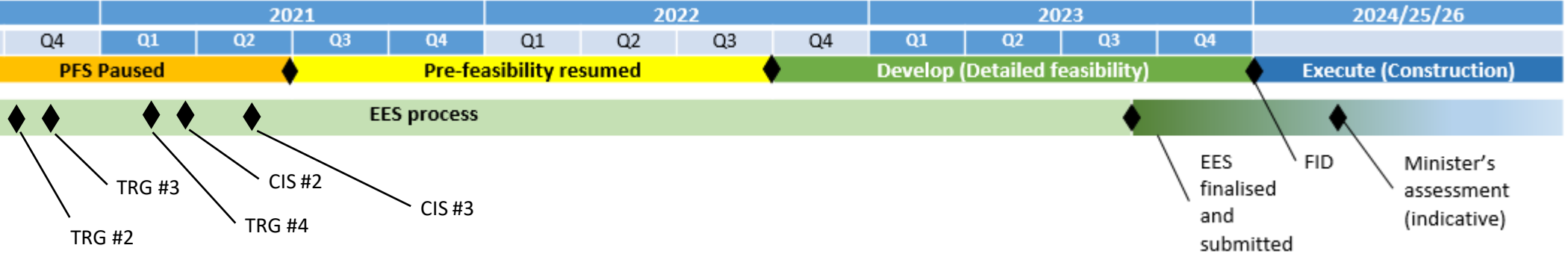
2014	Scoping Study on the fine mineral deposits of the Wimmera region completed
2015	Technology Development (mineral processing investigations) commenced
2016	Technology Development concluded
Mid 2018	Pre-feasibility Study (PFS) commenced
Late 2018	WIM100 bulk sample test pit established, bulk sampling of ore
Mid 2019	Pilot plants for mineral separation and refining, first customer samples produced
Aug 2019	Minister's assessment that an EES is required
Late 2019	Customer sample feedback received, mid-2020 set as target for proof of concept to address product quality concerns
Dec 2019	Technical Reference Group (TRG) established by DELWP, includes representatives from various regulatory agencies
Mid 2020	Product development team advises that additional time is required to finalise process development – up to 12 months
August 2020	Decision to pause all work fronts other than mineral processing technical development and License to Operate activities
Feb 2021	WIM100 test pit backfill, TRG#4
Mar 2021	WIM100 Test Pit backfill, CIS#2



**ILUKA**

# Wimmera Project & Indicative Timeline – as at Mar 2021

Mar 2021	Community Information Session #2 (CIS#2)
Mid-2021	Decision by Iluka Board on PFS resumption
Jul 2021	Technical Reference Group meeting #5 (TRG #5), CIS#3
Nov 2021	TRG#6
2022	TRG#7-9, CIS#4-6, Decision by Iluka Board on whether to proceed to DFS
2023	TRG#10, CIS#7-8, EES finalised and submitted
2024	Minister’s EES assessment, Iluka Board decision on whether to proceed to Project Execute



Douglas rehabilitation, Victoria

# Progress update – Engineering studies & activities



## PFS resources directed to the metallurgical team's continued R&D into zircon refining to achieve proof-of-concept

---

Metallurgical R&D work ongoing, focus on determination of the optimal processing technology

---

Final backfill of WIM100 test pit and associated site rehabilitation commenced mid-Feb 2021.

---

Mining study now focused on improving the definition of dredging as the method for ore mining and truck and excavator for overburden removal.

---

Retention Licence RL006904 for WIM100 pending grant, expected Q2 2021.

---

All other engineering studies and assessments paused as previously reported

---

Douglas rehabilitation, Victoria



# Progress update – EES studies & activities



## Environmental study program designed to address the finalised EES Scoping Requirements. The Project 'pause' period does not prevent the EES process from continuing

---

Monitoring for surface water, groundwater, air quality and airborne radiation (gross alpha/beta, radon) ongoing

---

Full 12 month air quality monitoring dataset concluded at end of Feb 2021

---

Noise and vibration impact assessment draft report (AECOM)

---

Historical Heritage impact assessment draft report (GHD)

---

Ecological assessments ongoing, including response to TRG review comments (Ecology & Heritage Partners)

---

Landscape and visual impact assessment draft report (Urbis)

---

Assessment of land use planning approval requirements (Jacobs)

---

Air quality and GHG assessments ongoing, draft reporting in development (ERM)

---

Land and Soil Capability Assessment fieldwork (soil survey) completed (EMM)

---

Aboriginal cultural heritage (CHMP development) ongoing. Additional fieldwork to be undertaken in March/April (GHD)

---

Radiological impact assessment ongoing (Radiation Consulting Australia)

---

All other studies and assessments parked

---

TRG and community consultation ongoing

---

Douglas rehabilitation, Victoria



**ILUKA**

# Community Engagement

**Iluka is committed to high levels of community engagement, beyond that required by approvals processes**

---

Transparent, inclusive and proactive approach

- community buy-in an important and fundamental element of Wimmera Project
- putting plans in place to engage and work with various local groups to ensure interests are heard; and actioned where reasonable

---

Iluka will work in partnership with State Government, Horsham Council and local community

- to develop a long-term, inclusive growth plan for Horsham (beginning with the development of the local mining industry)
  - welcome views on how best Iluka can add positive value to the region and the Council's existing economic growth plan
  - open to skills and training, infrastructure development and social programmes as ways of supporting the local community
- 



Meeting with Far West Coast indigenous leaders



**ILUKA**

# Consultation activities to date

## Open, ongoing dialogue with stakeholders is an integral part of the Project

---

Wimmera Project webpage <https://iluka.com/engage/wimmera> - 1156 views as at late February 2021

---

Dissemination of the Wimmera Project Update newsletters. All project updates available from Wimmera Project website

---

Drop-in information centres in Horsham and Natimuk during 2019 and early 2020

---

Community Information Session #1 at Noradjuha Hall – March 2020

---

Community Information Session #2 (face-to-face) in Toolondo Hall – March 2021

---

Ongoing consultation with Project area landowners to facilitate land access for environmental monitoring and assessments, discuss findings

---

Ongoing consultation with TRG and DELWP IAU

---

Project area site visits by TRG members

---

# Community concerns raised to date

The Project team want to know and understand your concerns

---

Traffic and road impact

---

Noise

---

Air quality and dust

---

Water source and availability

---

Impact to agricultural production

---

Aboriginal cultural heritage

---

Impact to family residences and rural lifestyle

---



# Questions?



# Wimmera Project – Community Information Session #2

Time	Item
9 am	Welcome and housekeeping Project update
9.15 am	Noise and vibration Q&A Break (5–10 minutes)
10 am	Landscape and visual Q&A Break (5–10 minutes)
10.40 am	Historical heritage Q&A Break (5–10 minutes)
11.20 am	Social impact Q&A
11.30 am	Close

Project website: [iluka.com/engage/wimmera](http://iluka.com/engage/wimmera)

Project email: [wimmera.project@iluka.com](mailto:wimmera.project@iluka.com)

