



Wimmera Project

Historic Heritage Assessment



Community Information Session #2
24 March 2021

ACKNOWLEDGEMENT OF COUNTRY

We would like to acknowledge the traditional custodians of the land, and pay our respects to Elders past, present and future. We celebrate and respect their continuing culture and connection to the land.



Purpose

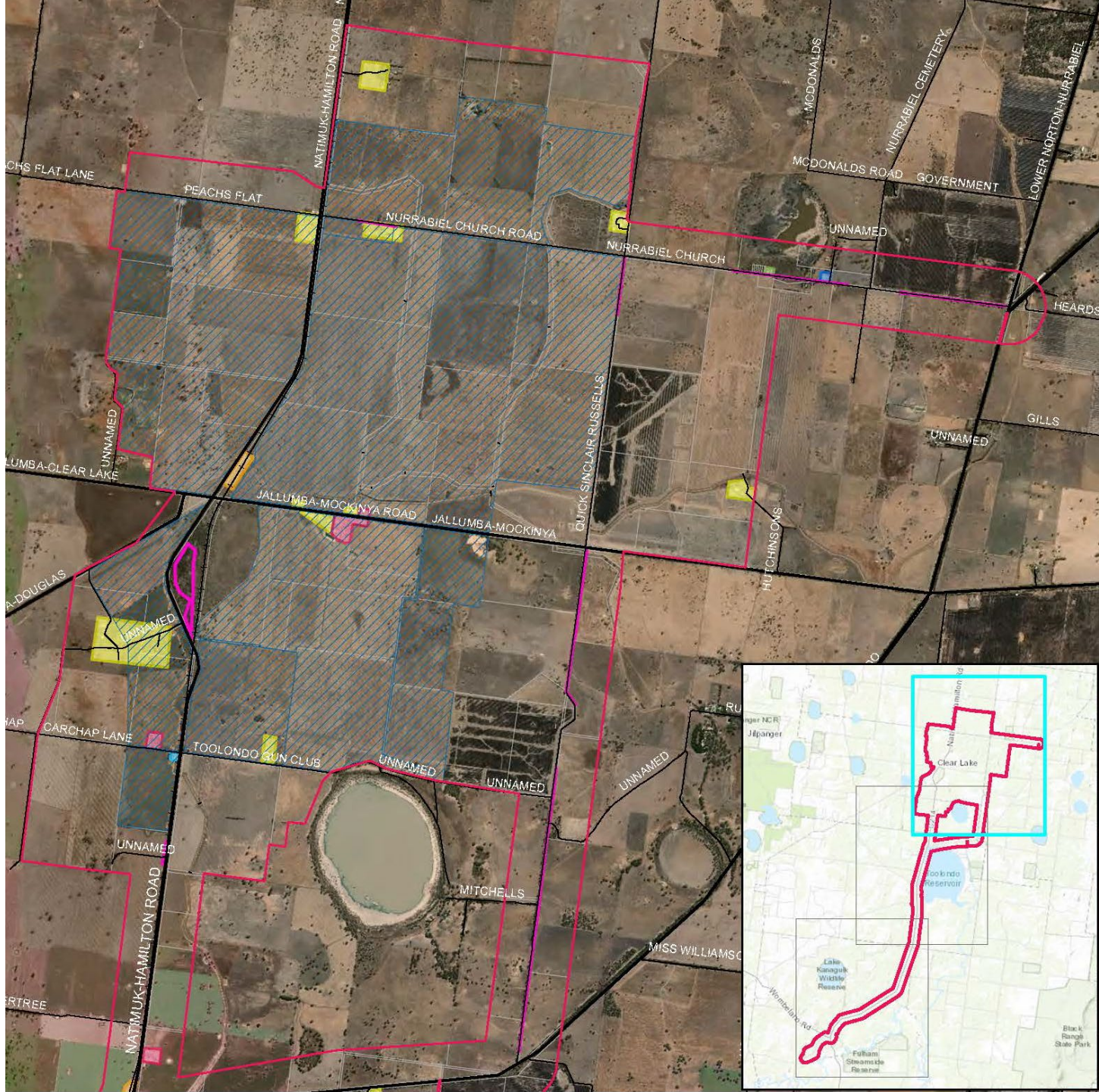
PURPOSE

The purpose of a Historical Heritage Assessment is to:

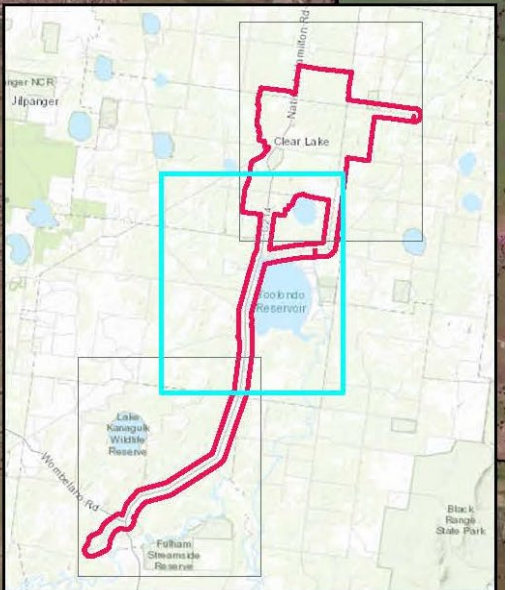
- Provide an **overview** on the potential places or objects of historic heritage significance
- Historic heritage significance can be at a **local, State** or **Commonwealth** level
- Provide **avoidance, mitigation** and **management** recommendations to the project

Historic Heritage Survey

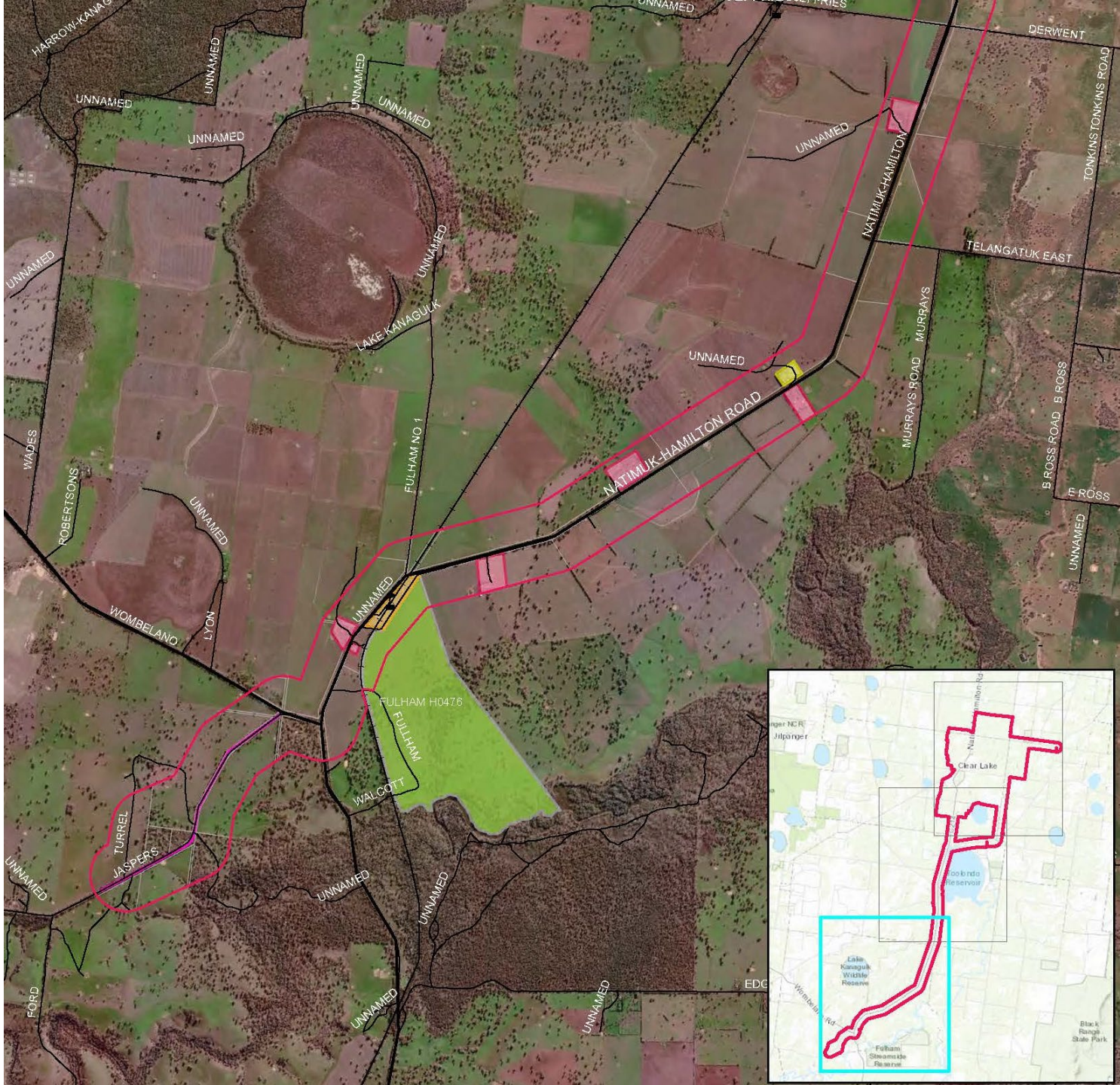
Survey coverage



Survey coverage



Survey coverage

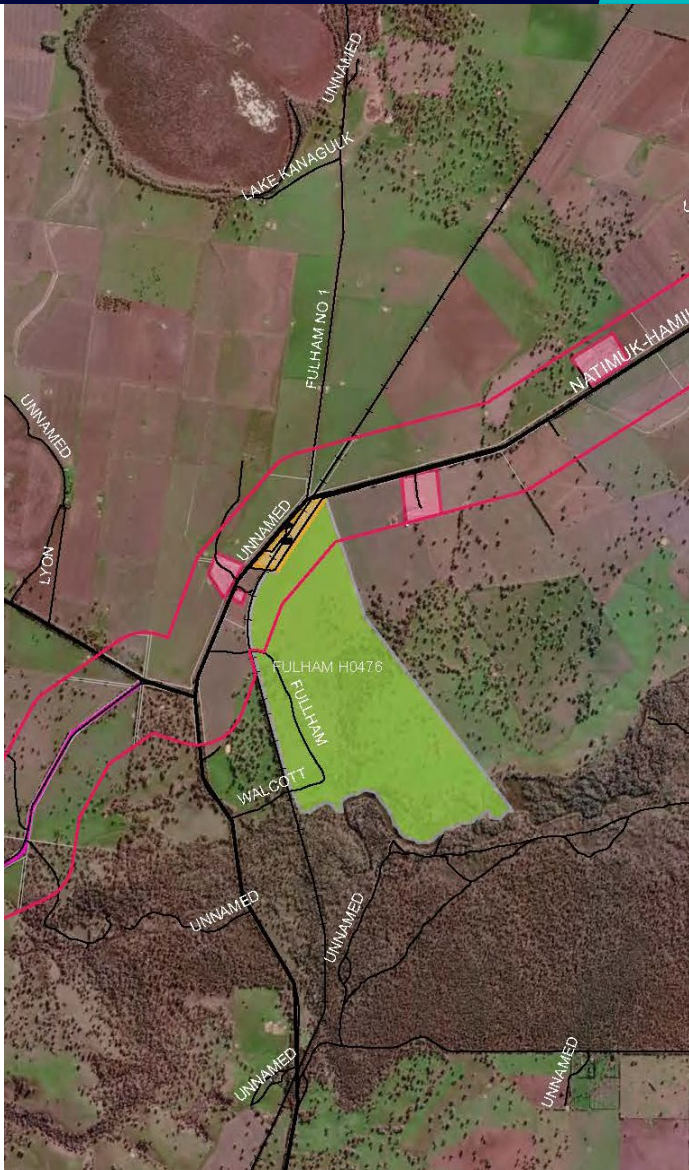


Places

Mount Talbot Homestead



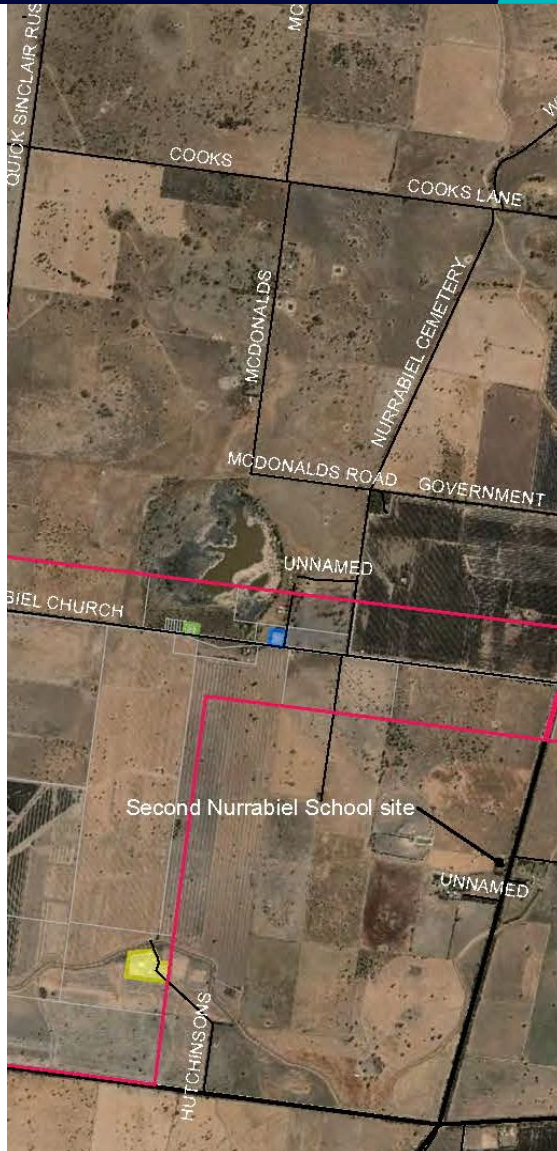
Fulham



Wimmera Mallee Stock and Domestic Channel System



Nurrabel Wesleyan Methodist Church and Nurrabel Primary School No. 2279



Nurrabel Primary School No. 2279

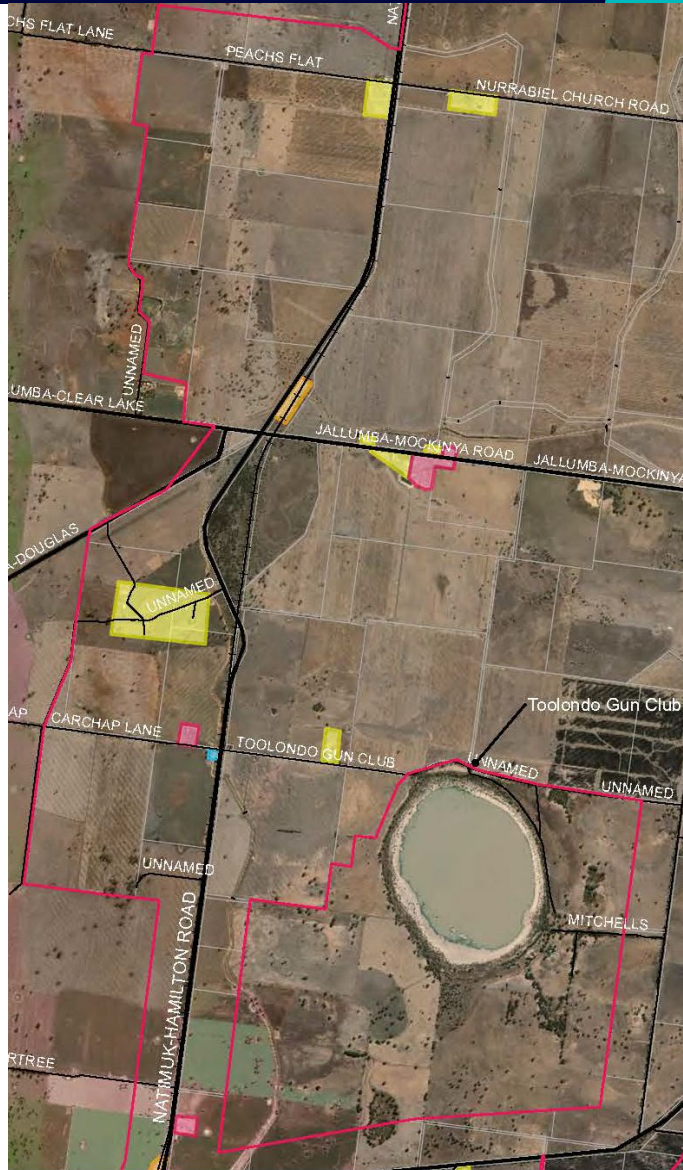


Nurrabel Wesleyan Methodist Church

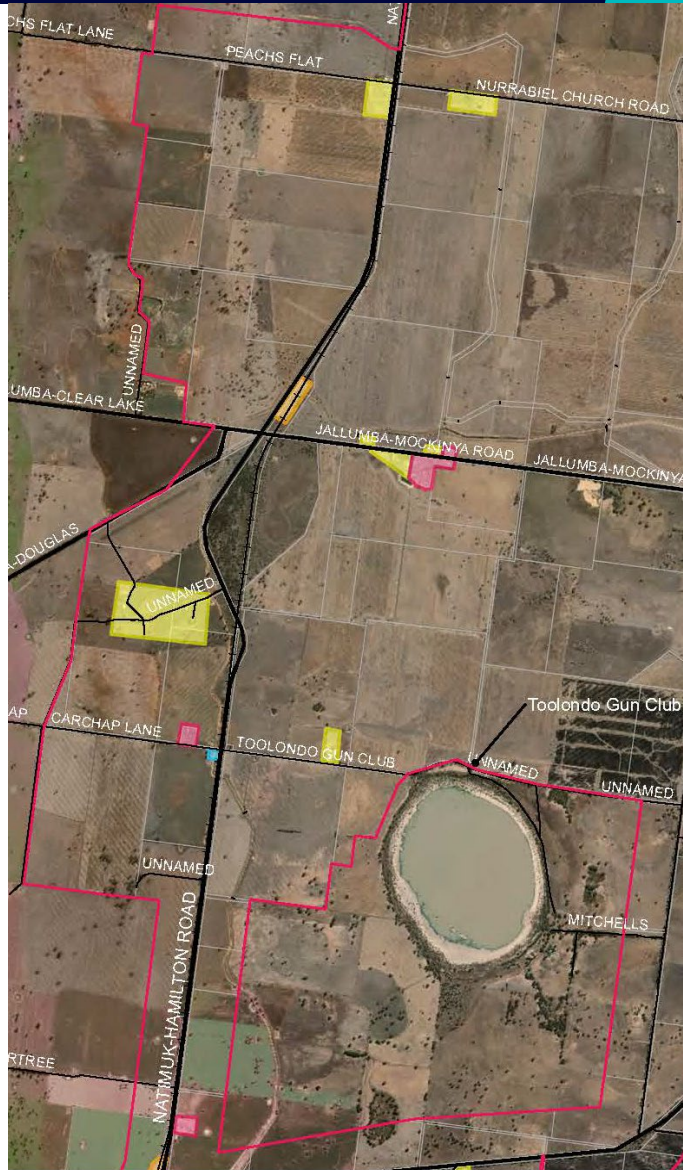
Carchap Primary School No. 2816



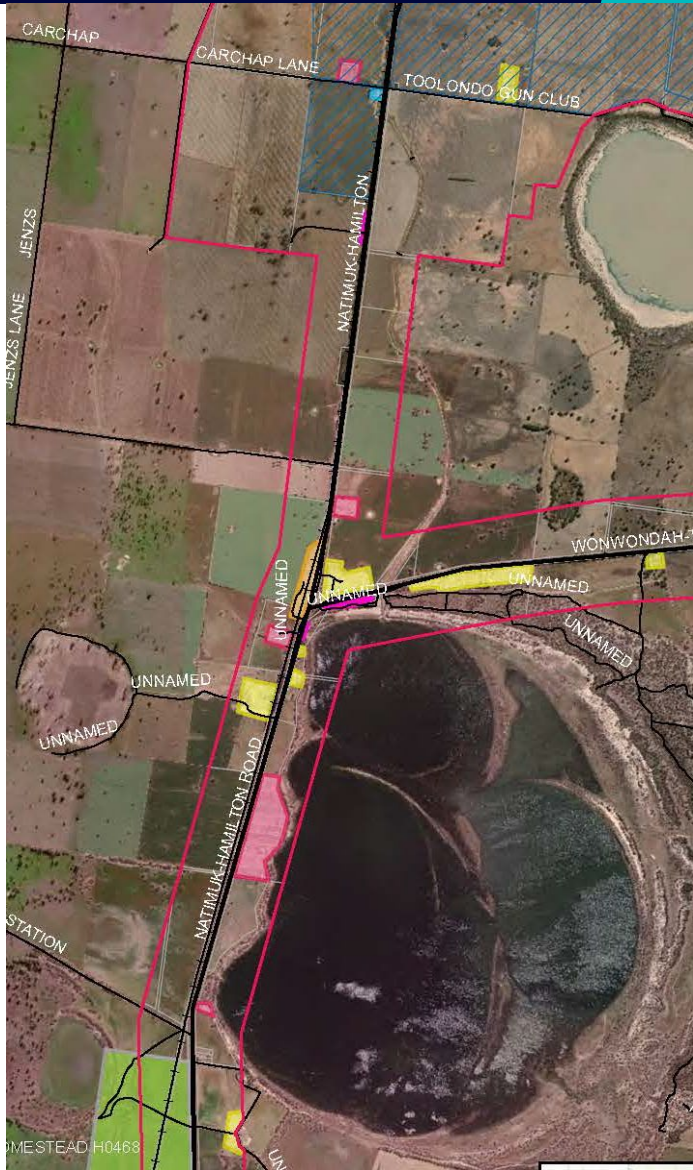
Former Balmoral rail line



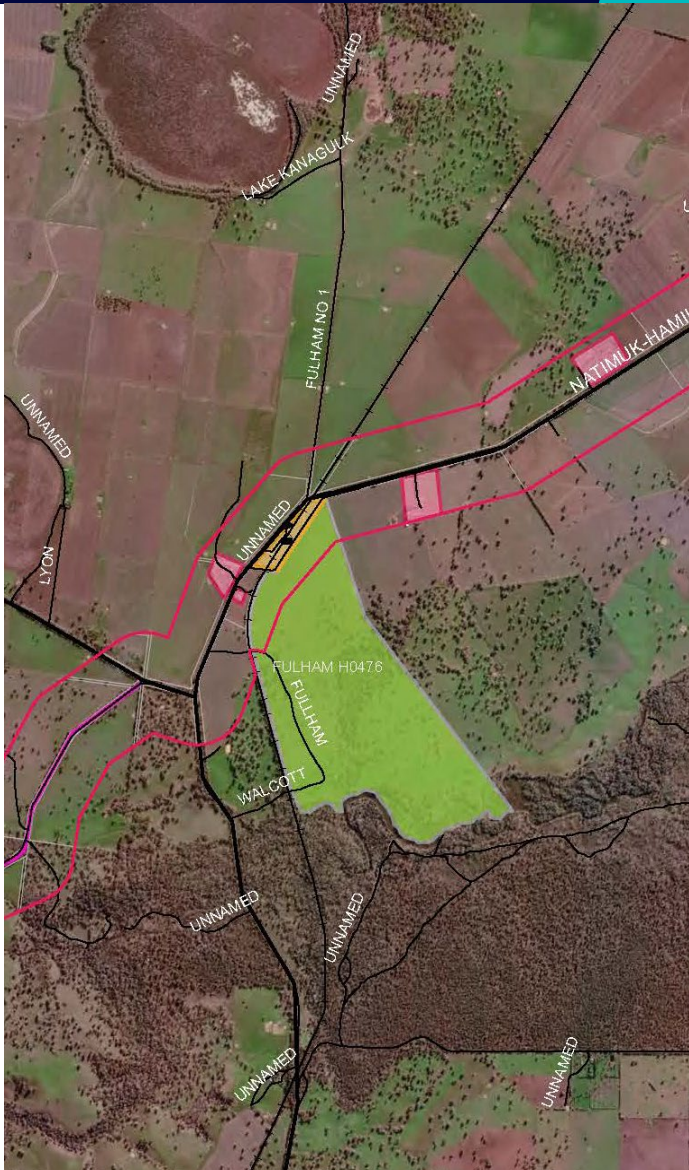
Former Jallumba Station



Former Toolondo Station



Former Kanagulk Station



Next Steps

Historical Heritage Assessment

Further survey to address gaps:

- Former Toolondo Station
- Former Kanagulk Station
- Nurrabel Primary School No. 2279
- Nurrabel Wesleyan Methodist Church
- General gaps in survey coverage

EWEN & RACHEL MCDONALD

SELECTED THIS LAND

AND BUILT THEIR HOME

ON THIS SITE IN 1874

ERECTED BY THEIR GREAT GRAND SON

NOEL MCDONALD IN 1974



Thank you