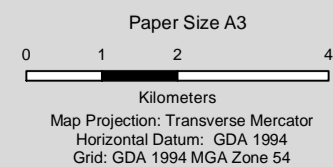


Source: Esri, Maxar, GeoEye, Earthstar Geographics, CNES/Airbus DS, USDA, USGS, AeroGRID, IGN, and the GIS User Community  
 Sources: Esri, HERE, Garmin, Intermap, increment P Corp., GEBCO, USGS, FAO, NPS, NRCAN, GeoBase, IGN, Kadaster

LEGEND

- Process water pipeline
- Proposed powerline
- Proposed pipeline
- Mine pit footprint
- Mine development footprint
- Study area



Iluka Resources Limited  
 Wimmera Project

Job Number 31-36122  
 Revision B  
 Date 20 Jan 2021

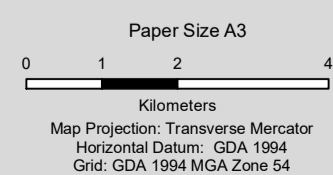
Location of the proposed works

Figure 2



Service Layer Credits: Source: Esri, Maxar, GeoEye, Earthstar Geographics, CNES/Airbus DS, USDA, USGS, AeroGRID, IGN, and the GIS User Community  
 Sources: Esri, HERE, Garmin, Intermap, increment P Corp., GEBCO, USGS, FAO, NPS, NRCAN, GeoBase, IGN, Kadaster

- LEGEND**
- Study area
  - VHR Place



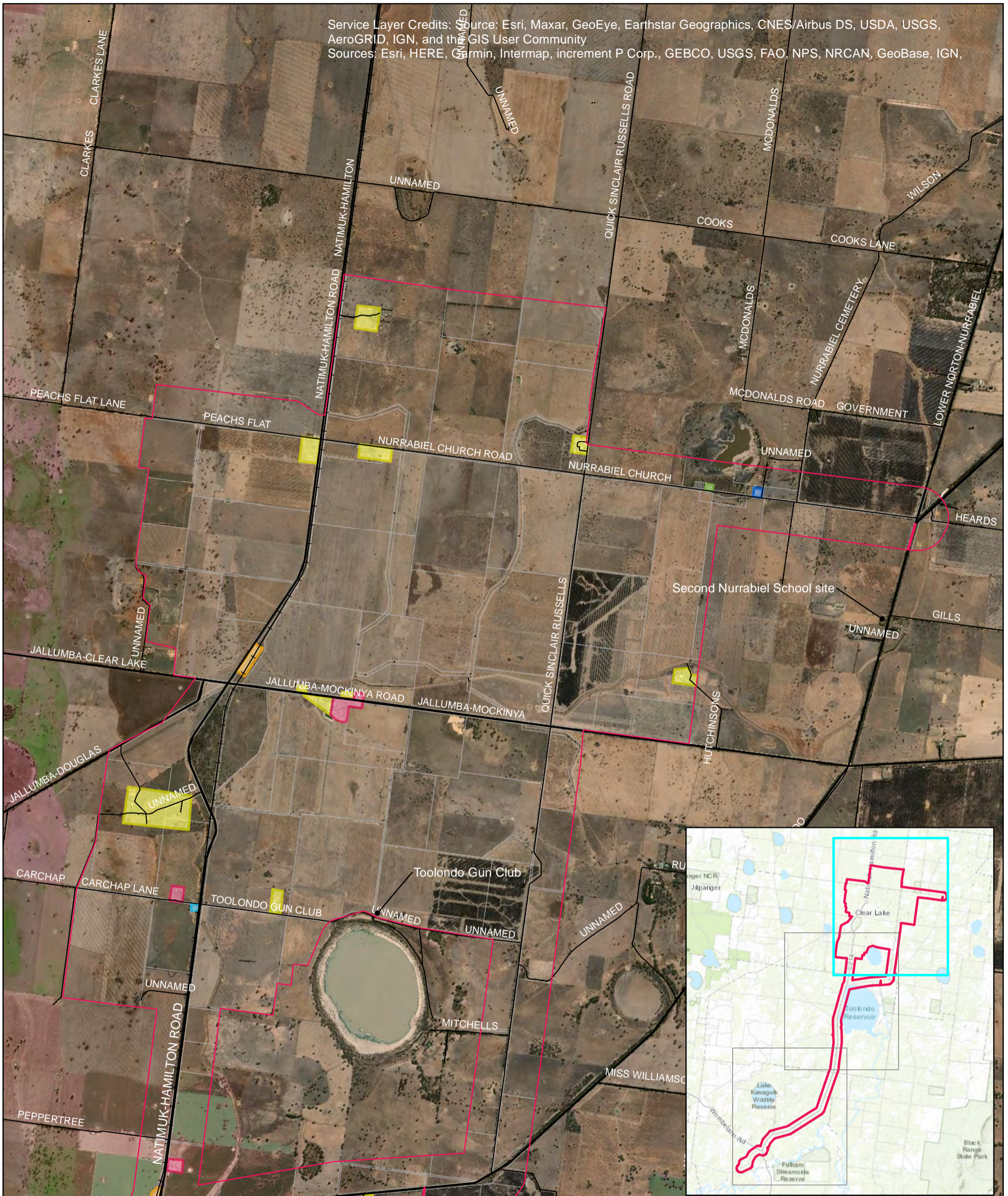
Iluka Resources Limited  
 Wimmera Project

Job Number	31-36122
Revision	B
Date	19 Jan 2021

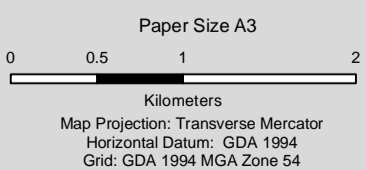
Heritage places in the study area

Figure 3

Service Layer Credits: Source: Esri, Maxar, GeoEye, Earthstar Geographics, CNES/Airbus DS, USDA, USGS, AeroGRID, IGN, and the GIS User Community  
 Sources: Esri, HERE, Garmin, Intermap, increment P Corp., GEBCO, USGS, FAO, NPS, NRCAN, GeoBase, IGN,



- LEGEND**
- Study area
  - Balmoral rail line station 1910s - 1980s
  - VHR Place - structures 1840s - current
  - Nurrabel Primary School No. 2279 (1880 - 1952)
  - Pre World War II structures - current
  - Nurrabel Wesleyan Methodist Church (1884 - 1990s)
  - Structures 1950s/1960s -current
  - Carchap Primary School No. 2816 (1887 - 1927)



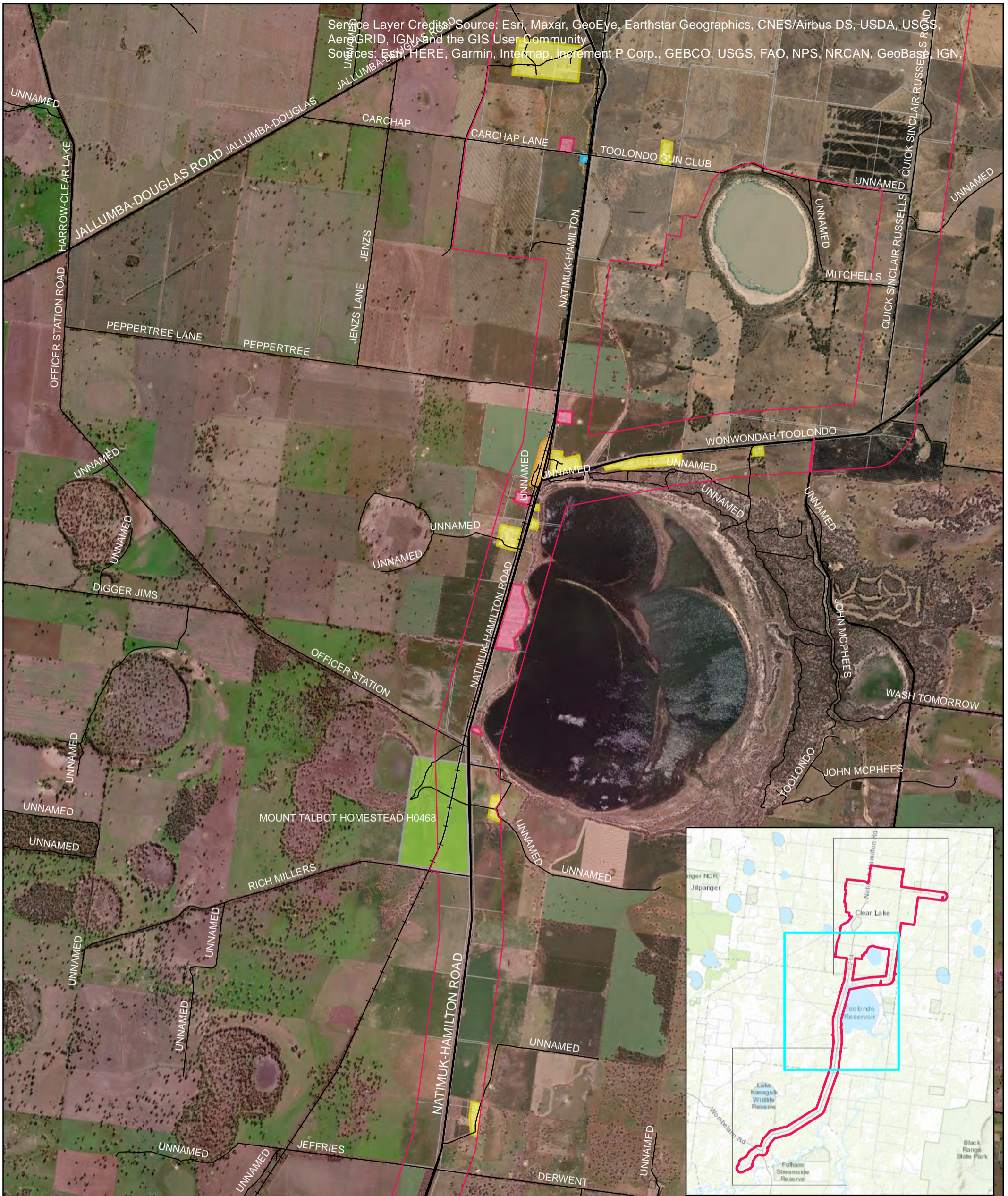
Iluka Resources Limited  
 Wimmera Project

Job Number | 31-36122  
 Revision | B  
 Date | 11 Feb 2021

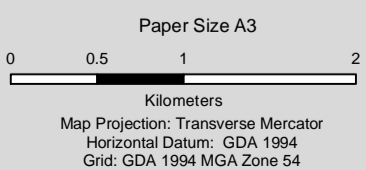
Built features in the study area

Figure 6

Service Layer Credits: Source: Esri, Maxar, GeoEye, Earthstar Geographics, CNES/Airbus DS, USDA, USGS, AeroGRID, IGN, and the GIS User Community  
 Sources: Esri, HERE, Garmin, Intermap, increment P Corp., GEBCO, USGS, FAO, NPS, NRCAN, GeoBase, IGN,



LEGEND			
	Study area		VHR Place - structures 1840s - current
	Nurrabel Primary School No. 2279 (1880 - 1952)		Pre World War II structures - current
	Nurrabel Wesleyan Methodist Church (1884 - 1990s)		Structures 1950s/1960s - current
	Carchap Primary School No. 2816 (1887 - 1927)		



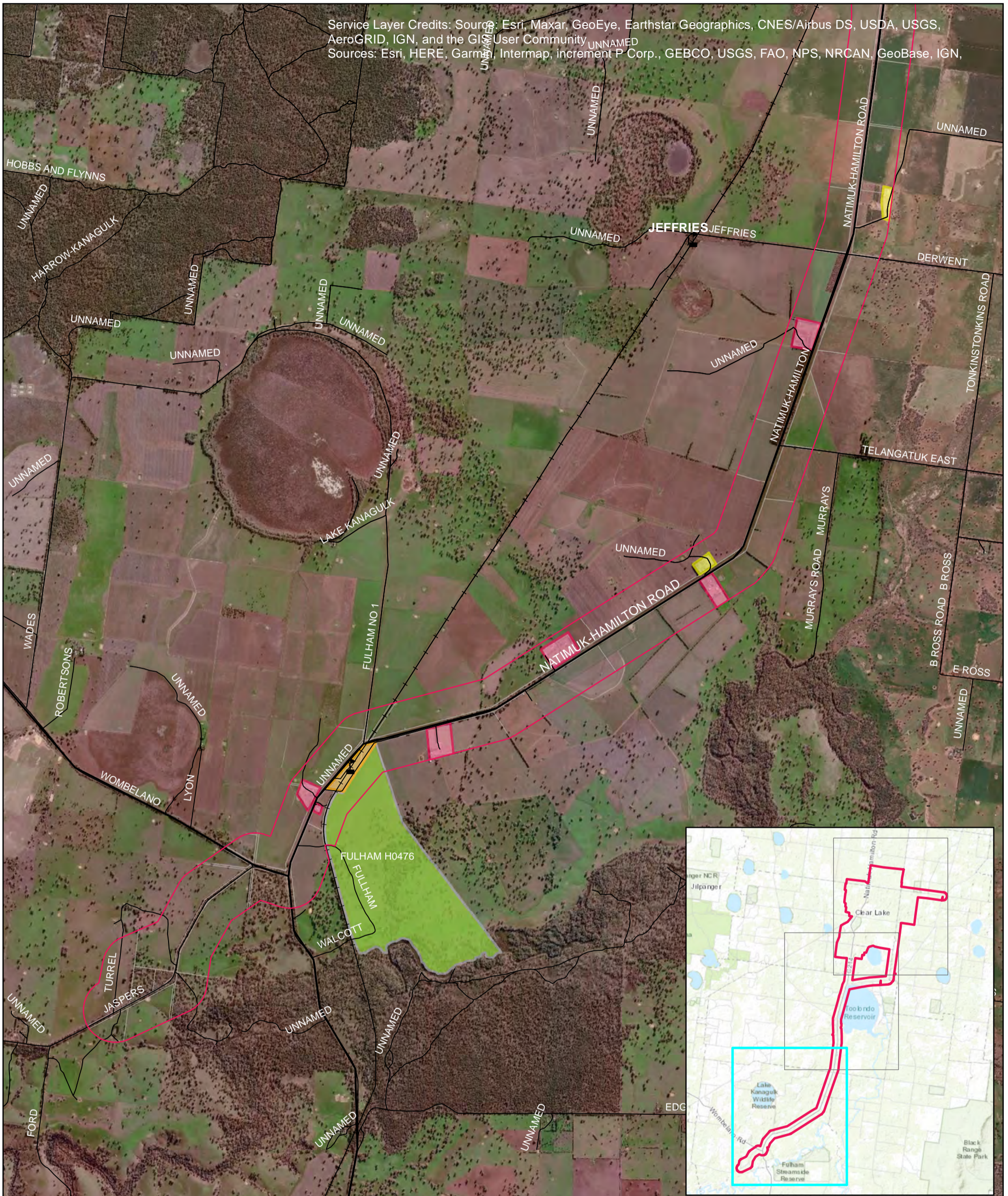
Iluka Resources Limited  
 Wimmera Project

Job Number | 31-36122  
 Revision | B  
 Date | 11 Feb 2021

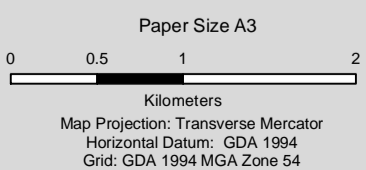
### Built features in the study area

Figure 7

Service Layer Credits: Source: Esri, Maxar, GeoEye, Earthstar Geographics, CNES/Airbus DS, USDA, USGS, AeroGRID, IGN, and the GIS User Community  
 Sources: Esri, HERE, Garmin, Intermap, increment P Corp., GEBCO, USGS, FAO, NPS, NRCAN, GeoBase, IGN,



- LEGEND**
- Study area
  - Balmoral rail line station 1910s - 1980s
  - VHR Place - structures 1840s - current
  - Structures 1950s/1960s -current



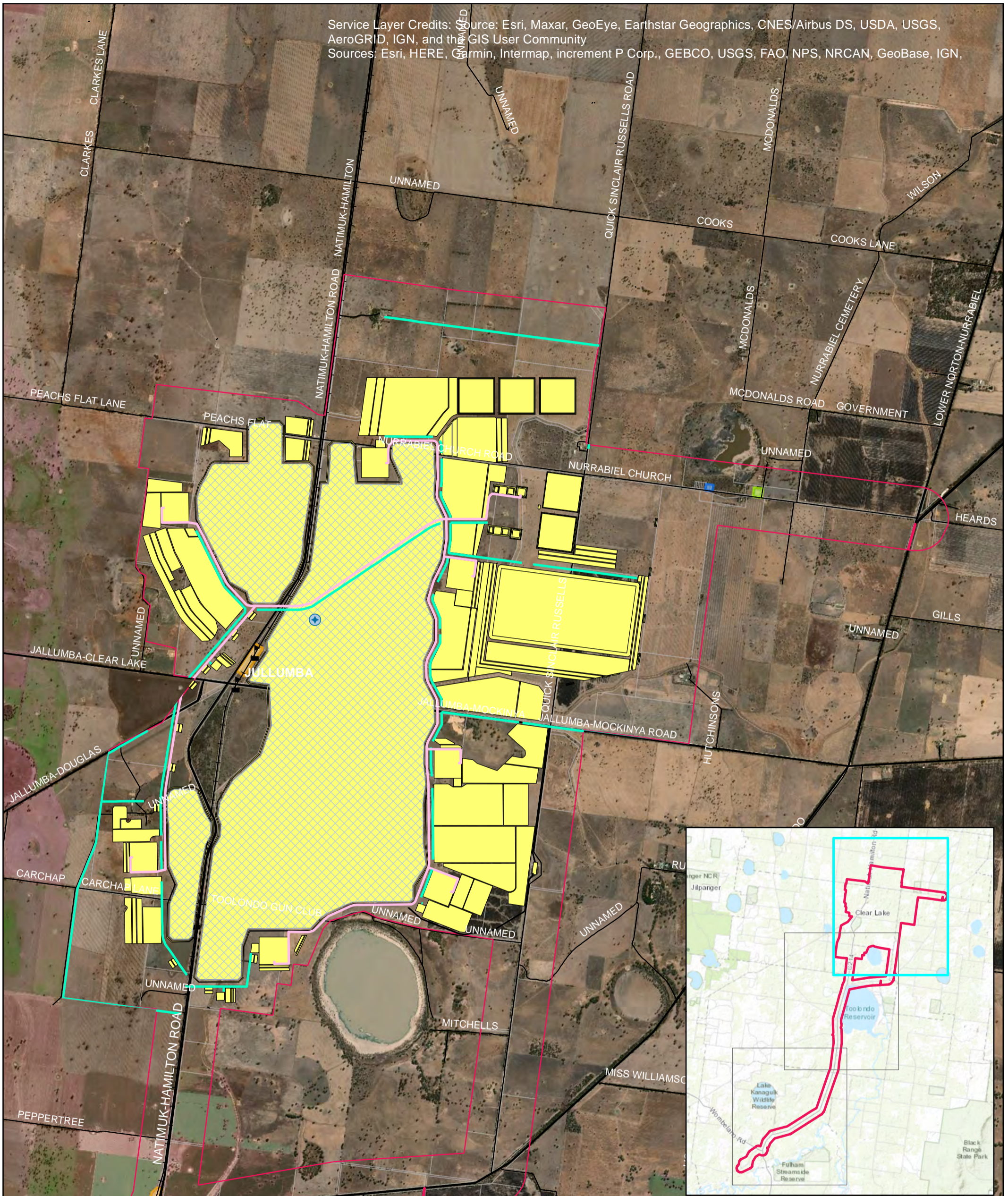
Iluka Resources Limited  
 Wimmera Project

Job Number | 31-36122  
 Revision | B  
 Date | 21 Jan 2021

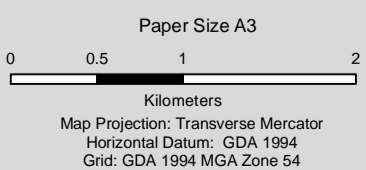
**Built features in the study area**

**Figure 8**

Service Layer Credits: Source: Esri, Maxar, GeoEye, Earthstar Geographics, CNES/Airbus DS, USDA, USGS, AeroGRID, IGN, and the GIS User Community  
 Sources: Esri, HERE, Garmin, Intermap, increment P Corp., GEBCO, USGS, FAO, NPS, NRCAN, GeoBase, IGN,



- |                        |                                   |  |
|------------------------|-----------------------------------|--|
| Proposed pipeline      | Mine development footprint        | Balmoral rail line station 1910s - 1980s |
| Process water pipeline | Study area                        | Nurrabiel Wesleyan Methodist Church      |
| Proposed powerline     | Nurrabiel Primary School No. 2279 | VHR Place                                |
| Surveyor blaze         |                                   |  |
| Mine pit footprint     |                                   |  |



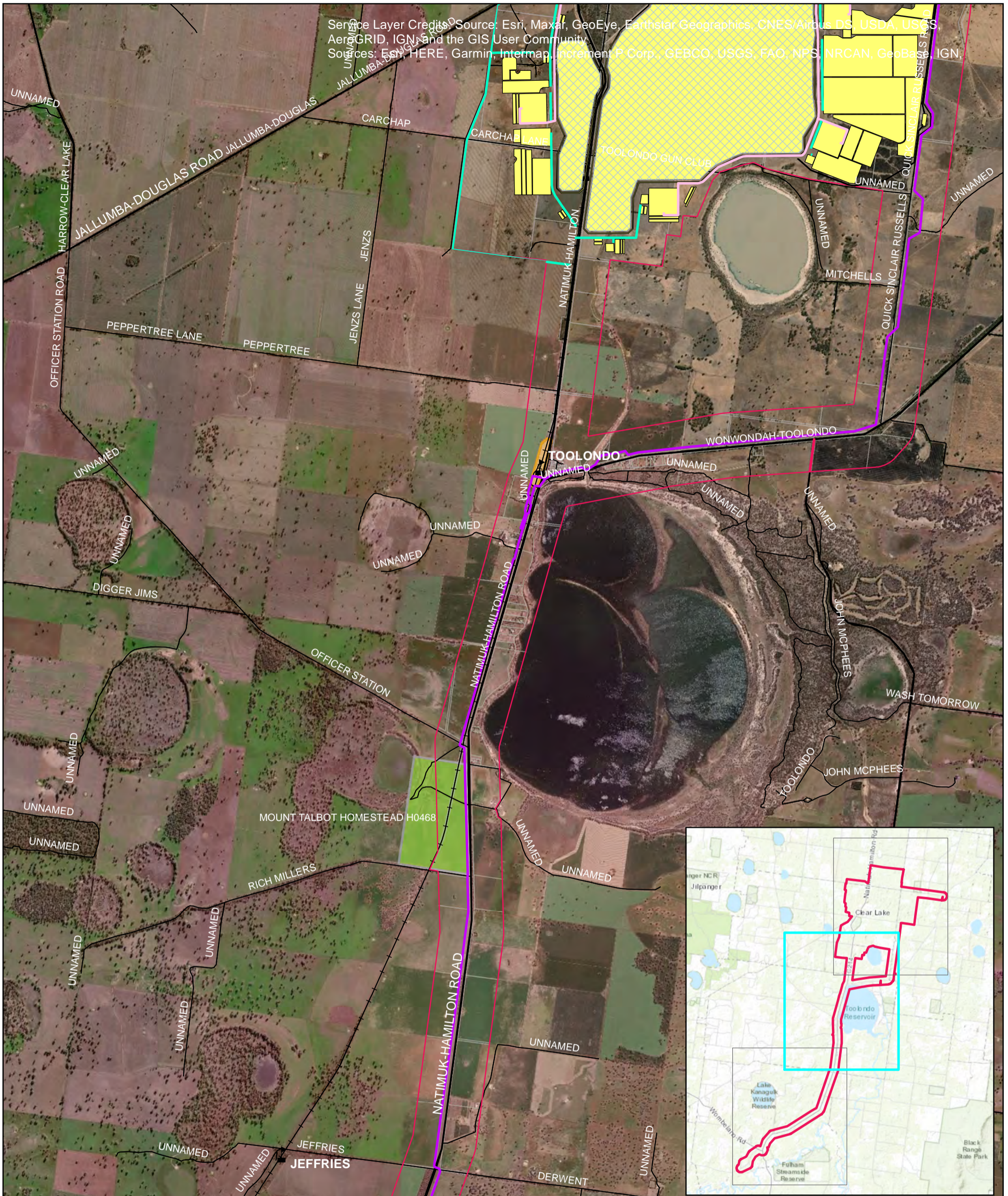
Iluka Resources Limited  
 Wimmera Project

Job Number | 31-36122  
 Revision | B  
 Date | 11 Feb 2021

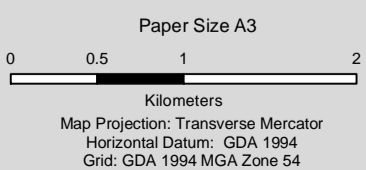
Impact assessment

Figure 12

Service Layer Credits: Source: Esri, Maxar, GeoEye, Earthstar Geographics, CNES/Airbus DS, USDA, USGS, AeroGRID, IGN, and the GIS User Community  
 Sources: Esri, HERE, Garmin, Intermap, increment P Corp., GEBCO, USGS, FAO, NPS, NRCAN, GeoBase, IGN,



- LEGEND**
- Proposed pipeline
  - Process water pipeline
  - Proposed powerline
  - Surveyor blaze
  - Mine pit footprint
  - Mine development footprint
  - Study area
  - Balmoral rail line station 1910s - 1980s
  - VHR Place



Iluka Resources Limited  
 Wimmera Project

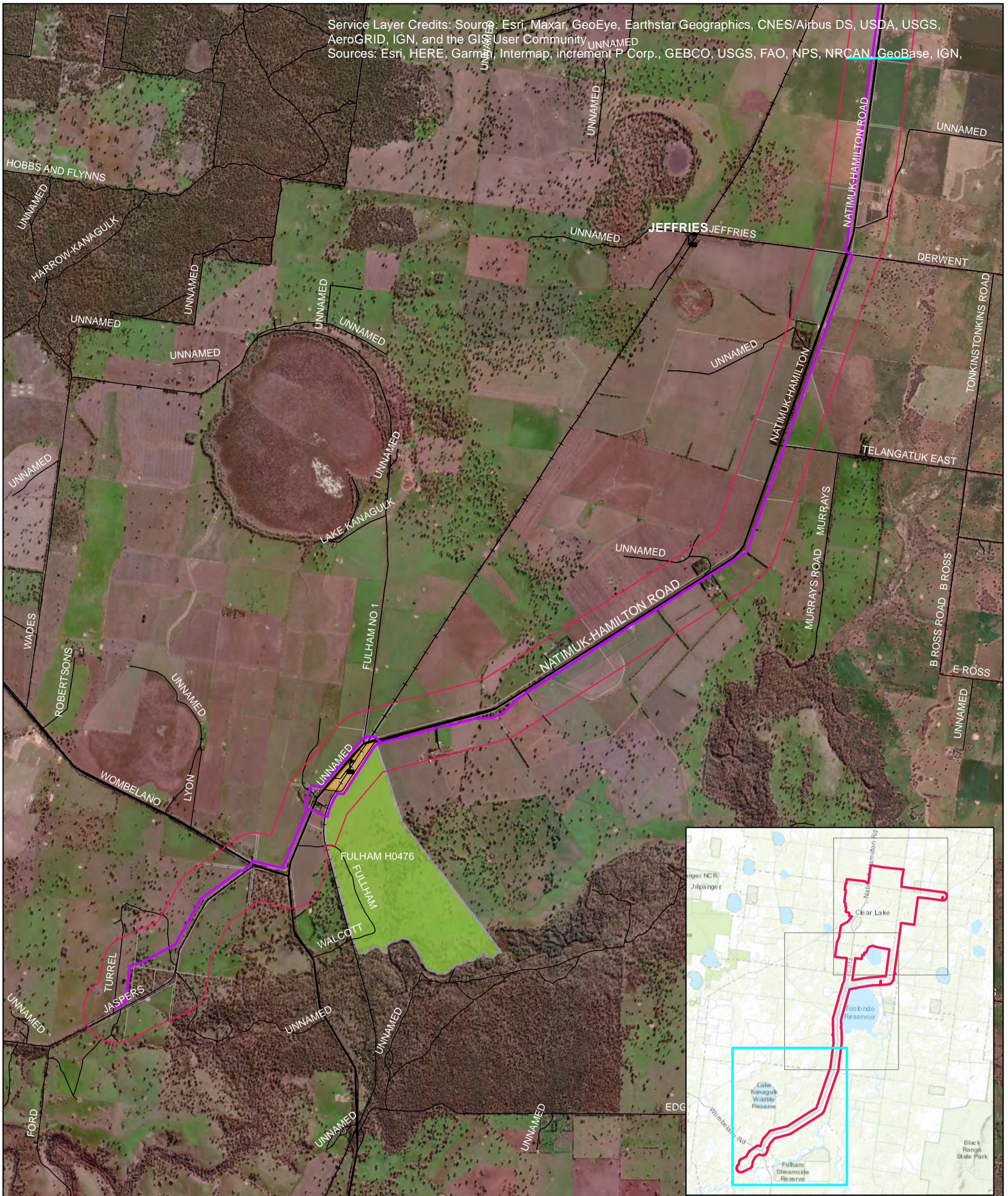
Job Number | 31-36122  
 Revision | B  
 Date | 21 Jan 2021

Impact assessment

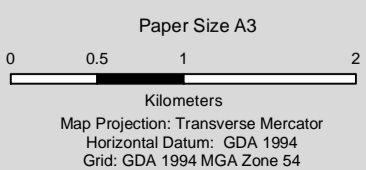
Figure 13



Service Layer Credits: Source: Esri, Maxar, GeoEye, Earthstar Geographics, CNES/Airbus DS, USDA, USGS, AeroGRID, IGN, and the GIS User Community  
 Sources: Esri, HERE, Garmin, Intermap, increment P Corp., GEBCO, USGS, FAO, NPS, NRCAN, GeoBase, IGN,



- LEGEND**
- Proposed pipeline
  - Process water pipeline
  - Proposed powerline
  - Surveyor blaze
  - Mine pit footprint
  - Mine development footprint
  - Study area
  - Balmoral rail line station 1910s - 1980s
  - VHR Place



Iluka Resources Limited  
 Wimmera Project

Job Number | 31-36122  
 Revision | B  
 Date | 21 Jan 2021

Impact assessment

Figure 14