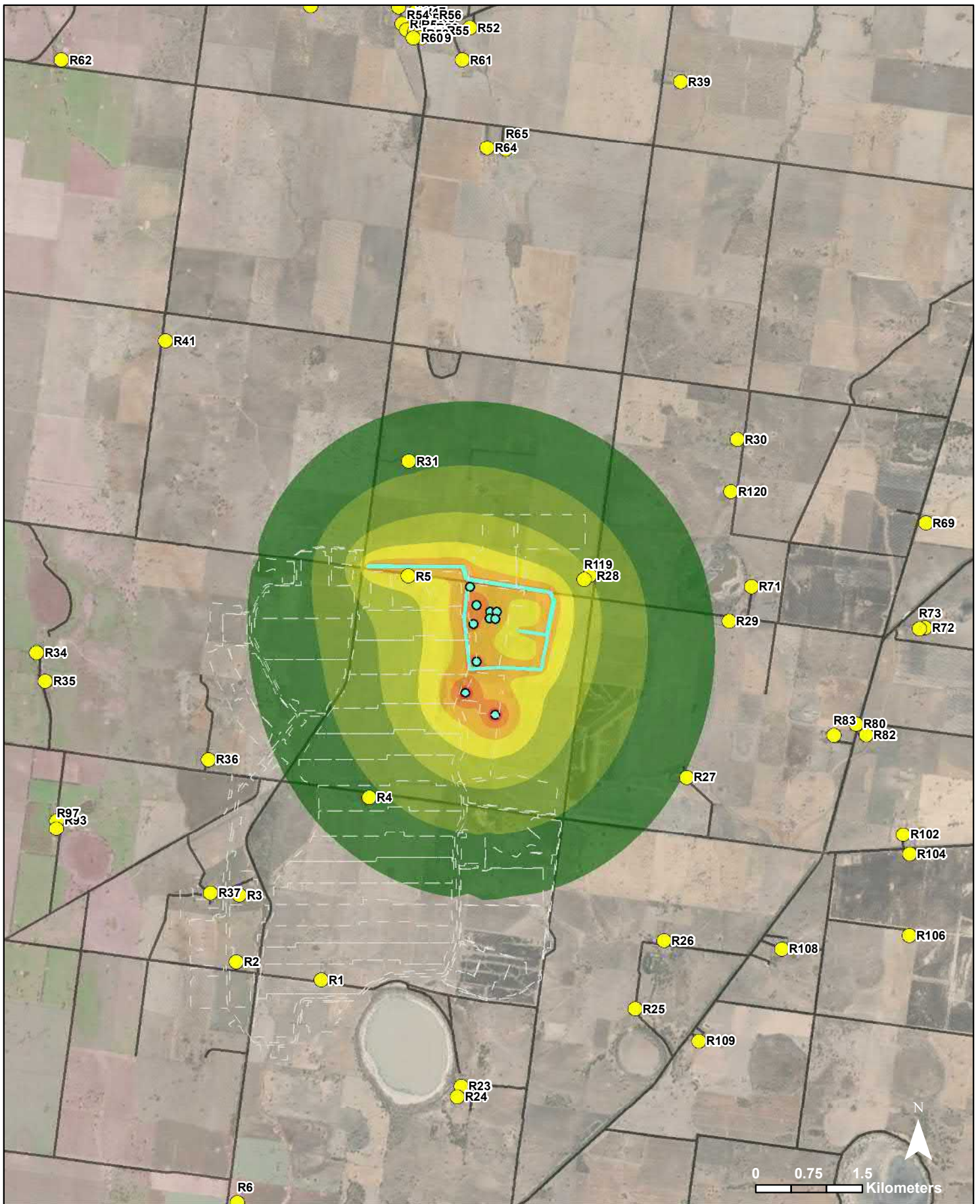


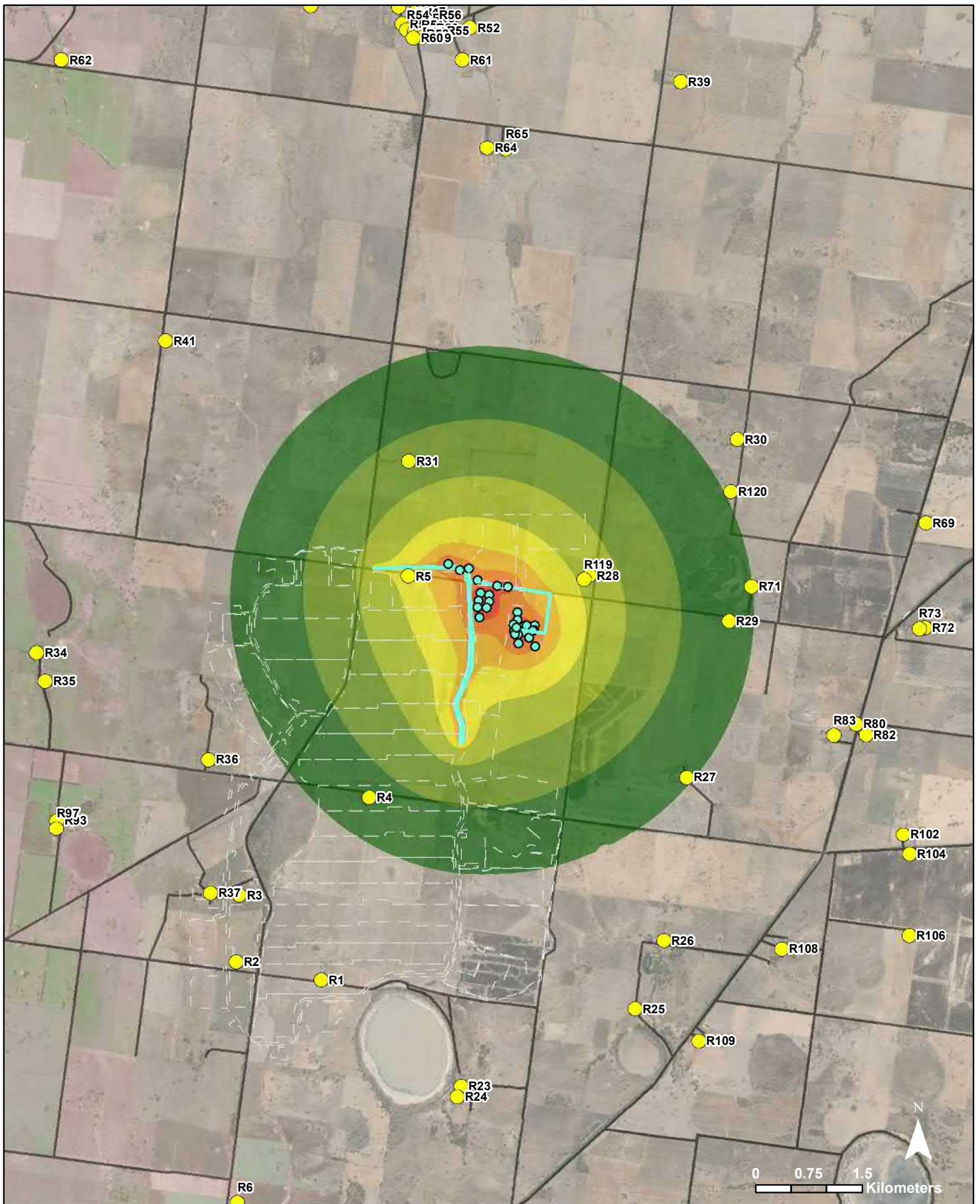
<b>Legend</b>		<b>Wimmera Project</b>		<b>AECOM</b>	
36 dB(A) or below	52 to 56 dB(A)	● Noise Source Plant	<b>Concrete Works - C2</b> Mining Construction Noise Levels		
37 to 41 dB(A)	57 to 61 dB(A)	— Noise Source Route			
42 to 46 dB(A)	62 to 66 dB(A)	— Roads	PROJECT ID 60619931 CREATED BY JC LAST MODIFIED 03 February 2020		
47 to 51 dB(A)	67 dB(A) or above	- - Mine Area			
● Receptors			<b>Figure 2-2</b>		





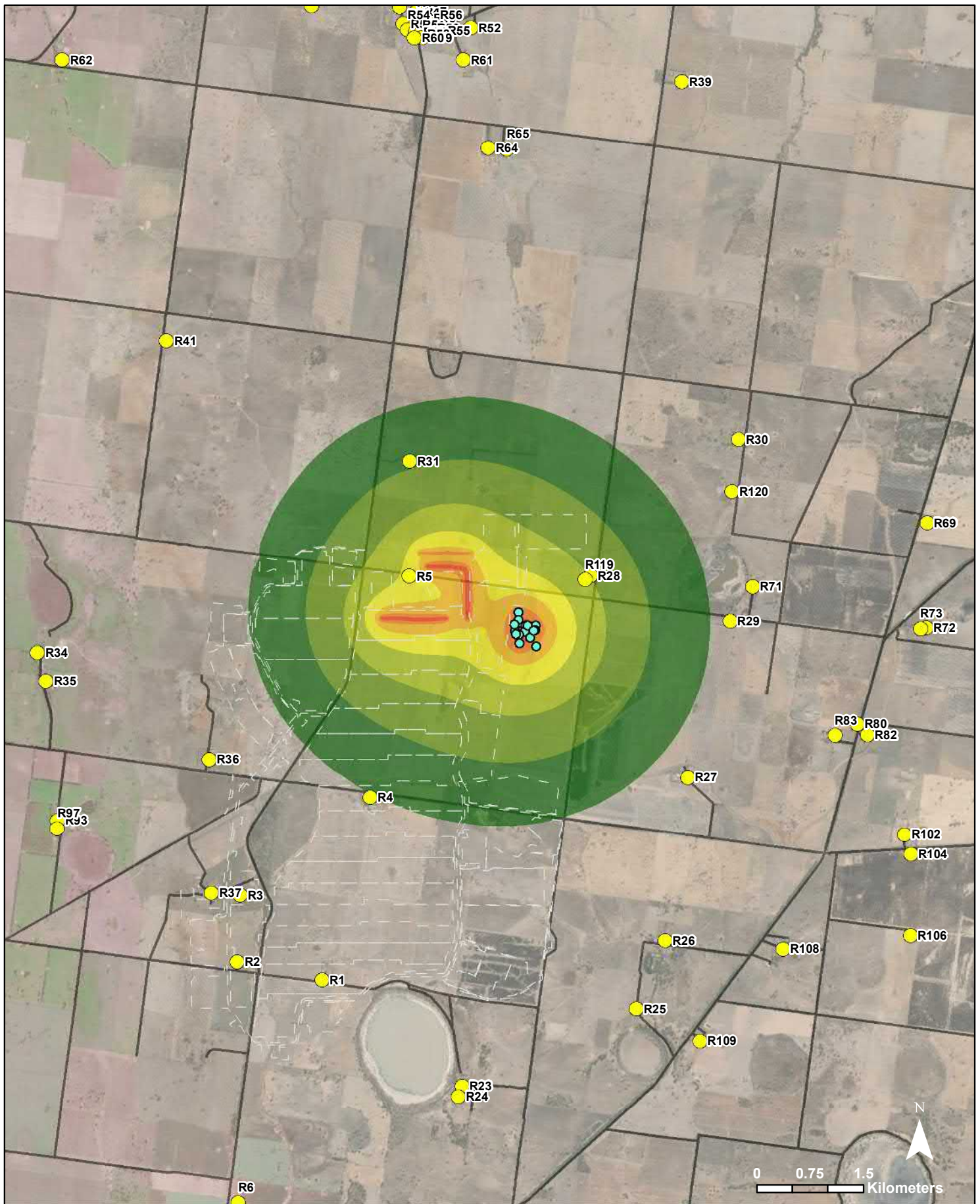
<b>Legend</b>		<b>Wimmera Project</b>		<b>AECOM</b>
<ul style="list-style-type: none"> <li><span style="display: inline-block; width: 15px; height: 15px; border: 1px solid black; background-color: white; margin-right: 5px;"></span> 36 dB(A) or below</li> <li><span style="display: inline-block; width: 15px; height: 15px; background-color: #4CAF50; margin-right: 5px;"></span> 37 to 41 dB(A)</li> <li><span style="display: inline-block; width: 15px; height: 15px; background-color: #8BC34A; margin-right: 5px;"></span> 42 to 46 dB(A)</li> <li><span style="display: inline-block; width: 15px; height: 15px; background-color: #C8E6C9; margin-right: 5px;"></span> 47 to 51 dB(A)</li> </ul>	<ul style="list-style-type: none"> <li><span style="display: inline-block; width: 15px; height: 15px; background-color: #FFEB3B; margin-right: 5px;"></span> 52 to 56 dB(A)</li> <li><span style="display: inline-block; width: 15px; height: 15px; background-color: #FFC107; margin-right: 5px;"></span> 57 to 61 dB(A)</li> <li><span style="display: inline-block; width: 15px; height: 15px; background-color: #FF9800; margin-right: 5px;"></span> 62 to 66 dB(A)</li> <li><span style="display: inline-block; width: 15px; height: 15px; background-color: #FF5722; margin-right: 5px;"></span> 67 dB(A) or above</li> <li><span style="display: inline-block; width: 10px; height: 10px; background-color: yellow; border-radius: 50%; margin-right: 5px;"></span> Receptors</li> </ul>	<ul style="list-style-type: none"> <li><span style="display: inline-block; width: 10px; height: 10px; border: 1px solid cyan; border-radius: 50%; margin-right: 5px;"></span> Noise Source Plant</li> <li><span style="display: inline-block; width: 20px; border-bottom: 2px solid cyan; margin-right: 5px;"></span> Noise Source Route</li> <li><span style="display: inline-block; width: 20px; border-bottom: 1px solid black; margin-right: 5px;"></span> Roads</li> <li><span style="display: inline-block; width: 20px; border-bottom: 1px dashed black; margin-right: 5px;"></span> Mine Area</li> </ul>	<p><b>Mine Access Road Works - C3</b> Mining Construction Noise Levels</p>	
		<p>PROJECT ID: 60619931 CREATED BY: JC LAST MODIFIED: 03 February 2020</p>		<p><b>Figure 2-3</b></p>





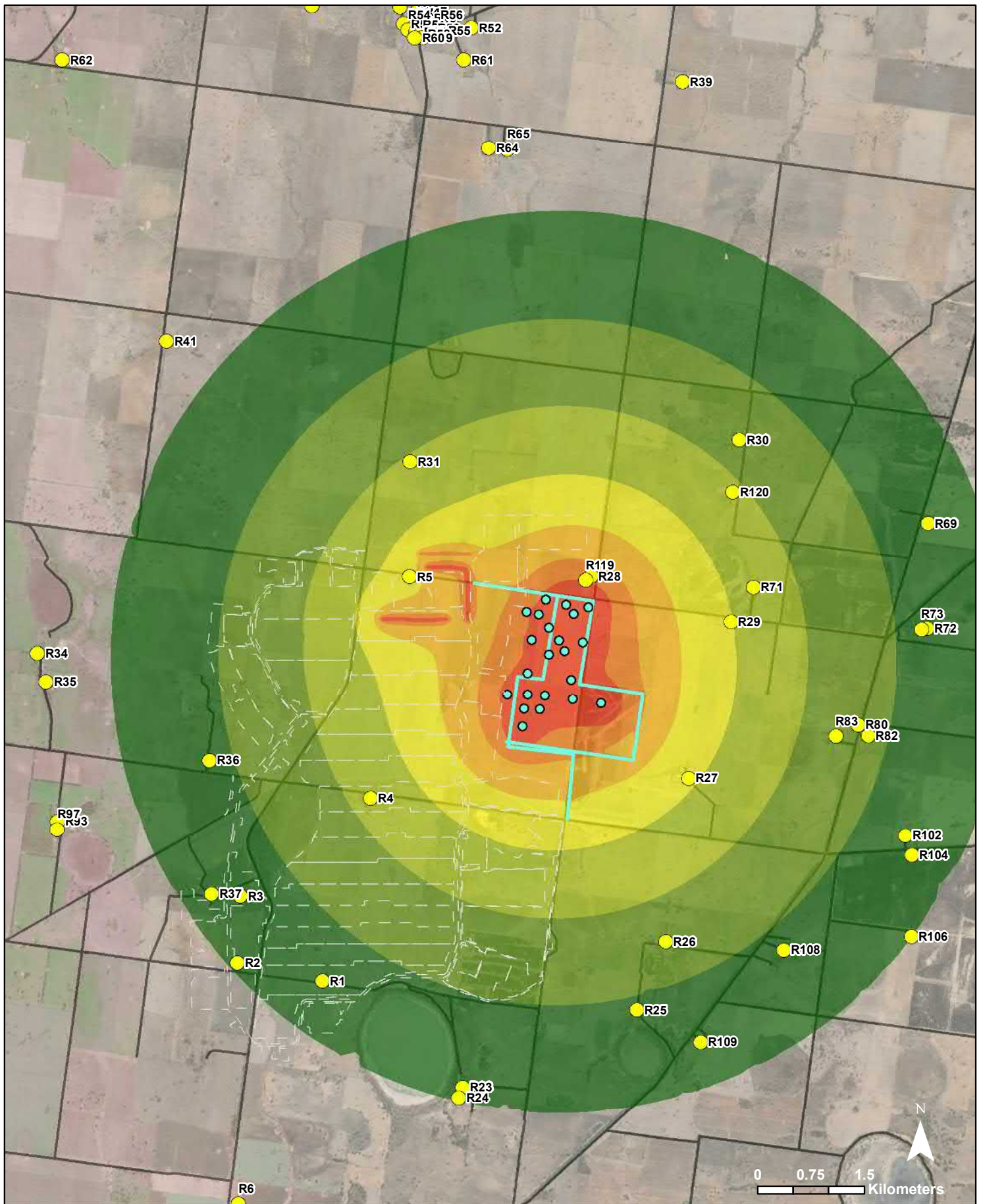
<b>Legend</b>		<b>Wimmera Project</b>		<b>AECOM</b>	
36 dB(A) or below	52 to 56 dB(A)	● Noise Source Plant	<b>EP TSF Construction - C2/C4/C5 Mining Construction Noise Levels</b>		
37 to 41 dB(A)	57 to 61 dB(A)	— Noise Source Route			
42 to 46 dB(A)	62 to 66 dB(A)	— Roads	PROJECT ID 60619931 CREATED BY JC LAST MODIFIED 03 February 2020		
47 to 51 dB(A)	67 dB(A) or above	- - Mine Area			
● Receptors			<b>Figure 2-4</b>		





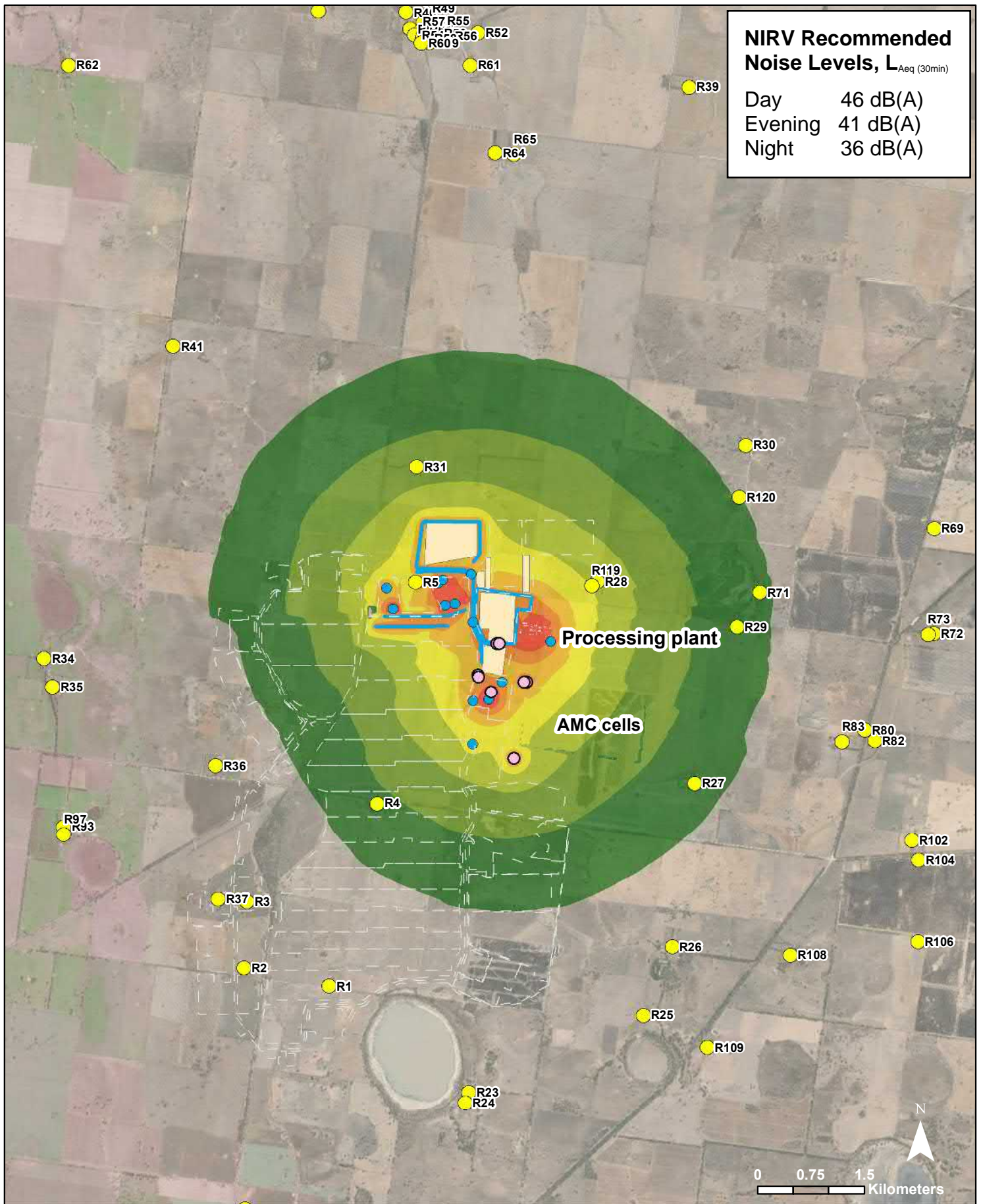
<b>Legend</b>		<b>Wimmera Project</b>		<b>AECOM</b>	
36 dB(A) or below	52 to 56 dB(A)	● Noise Source Plant	<b>Floc Plant SMP Install - C4/C5 Mining Construction Noise Levels</b>		
37 to 41 dB(A)	57 to 61 dB(A)	— Roads			
42 to 46 dB(A)	62 to 66 dB(A)	- - - Mine Area	PROJECT ID 60619931		
47 to 51 dB(A)	67 dB(A) or above	● Receptors	CREATED BY JC		
			LAST MODIFIED 03 February 2020		
			<b>Figure 2-5</b>		





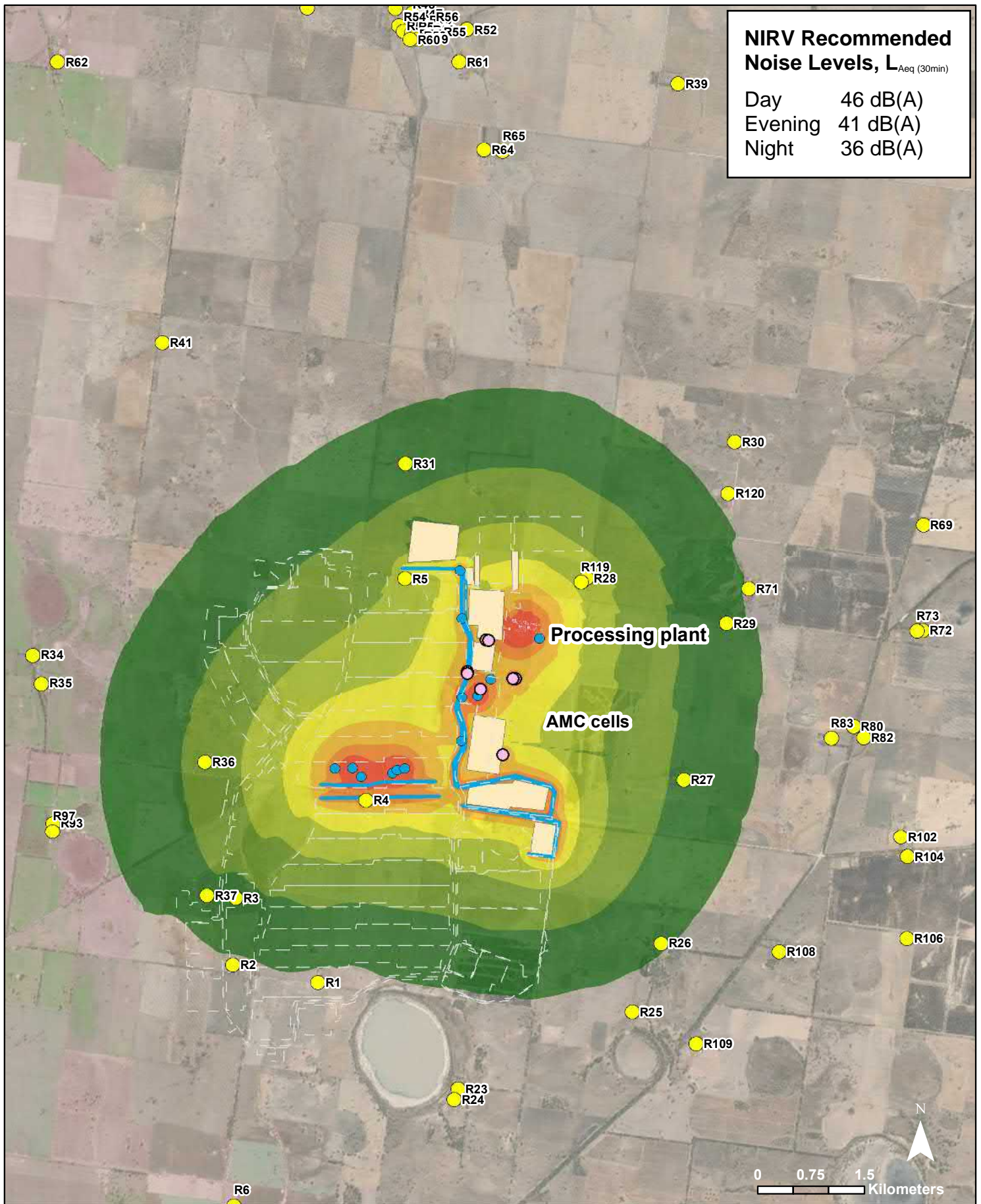
<b>Legend</b>		<b>Wimmera Project</b>		<b>AECOM</b>	
36 dB(A) or below	52 to 56 dB(A)	Noise Source Plant	<b>Plant Construction - C6</b> Mining Construction Noise Levels		
37 to 41 dB(A)	57 to 61 dB(A)	Noise Source Route			
42 to 46 dB(A)	62 to 66 dB(A)	Roads	PROJECT ID 60619931 CREATED BY JC LAST MODIFIED 03 February 2020		
47 to 51 dB(A)	67 dB(A) or above	Mine Area			
Receptors			<b>Figure 2-6</b>		





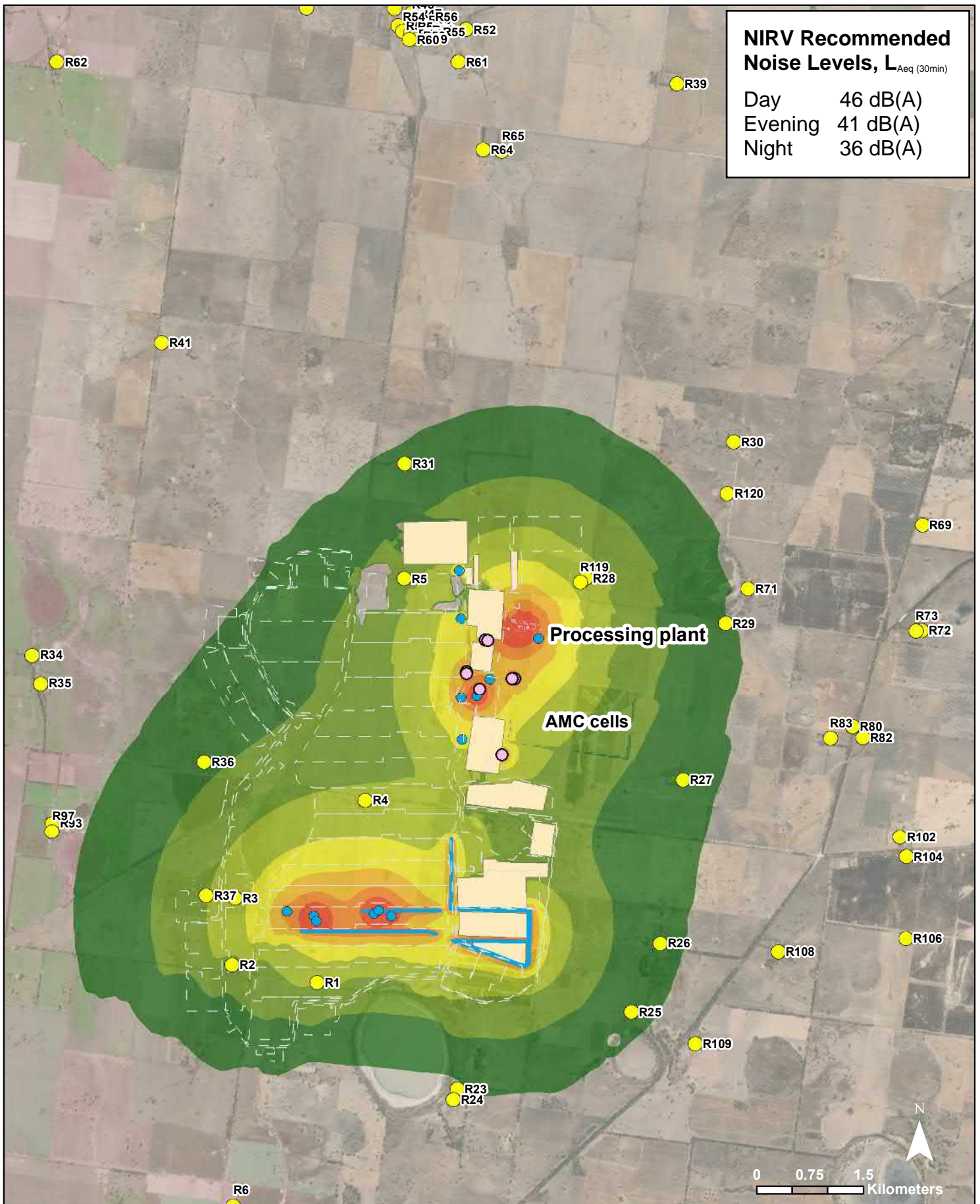
<b>Legend</b>		<b>Wimmera Project</b>		<b>AECOM</b>	
<ul style="list-style-type: none"> <li><span style="display: inline-block; width: 15px; height: 15px; border: 1px solid black; background-color: white;"></span> Less than 36 dB(A)</li> <li><span style="display: inline-block; width: 15px; height: 15px; background-color: green;"></span> 37 - 41 dB(A)</li> <li><span style="display: inline-block; width: 15px; height: 15px; background-color: lightgreen;"></span> 42 - 46 dB(A)</li> <li><span style="display: inline-block; width: 15px; height: 15px; background-color: yellowgreen;"></span> 47 - 51 dB(A)</li> <li><span style="display: inline-block; width: 15px; height: 15px; background-color: yellow;"></span> 52 - 56 dB(A)</li> <li><span style="display: inline-block; width: 15px; height: 15px; background-color: orange;"></span> 57 - 61 dB(A)</li> <li><span style="display: inline-block; width: 15px; height: 15px; background-color: red;"></span> 62 - 66 dB(A)</li> <li><span style="display: inline-block; width: 15px; height: 15px; background-color: red;"></span> 67 dB(A) or above</li> <li><span style="display: inline-block; width: 15px; height: 15px; background-color: yellow; border-radius: 50%;"></span> Receptors</li> </ul>	<ul style="list-style-type: none"> <li><span style="display: inline-block; width: 15px; height: 15px; background-color: blue; border-radius: 50%;"></span> Mobile Plant</li> <li><span style="display: inline-block; width: 15px; height: 15px; background-color: blue; border-bottom: 2px solid blue;"></span> Haul Road</li> <li><span style="display: inline-block; width: 15px; height: 15px; background-color: orange;"></span> Stockpiles</li> <li><span style="display: inline-block; width: 15px; height: 15px; background-color: pink;"></span> Processing Plant</li> <li><span style="display: inline-block; width: 15px; border-bottom: 1px dashed black;"></span> Mine Area</li> <li><span style="display: inline-block; width: 15px; height: 15px; border: 1px solid black; border-radius: 50%;"></span> Fixed Facilities</li> </ul>	<p><b>Yr1 Dredge Mining (Night)</b>          Mine Operation and Processing Plant  <i>Normal weather conditions</i></p>		<p><b>Figure 3-1</b></p>	
		<p>PROJECT ID: 60619931          CREATED BY: JC          LAST MODIFIED: 03 February 2020</p>			





<b>Legend</b>		<b>Wimmera Project</b>		<b>AECOM</b>	
<ul style="list-style-type: none"> <li><span style="display: inline-block; width: 15px; height: 15px; border: 1px solid black; background-color: white; margin-right: 5px;"></span> Less than 36 dB(A)</li> <li><span style="display: inline-block; width: 15px; height: 15px; background-color: #4CAF50; margin-right: 5px;"></span> 37 - 41 dB(A)</li> <li><span style="display: inline-block; width: 15px; height: 15px; background-color: #81C784; margin-right: 5px;"></span> 42 - 46 dB(A)</li> <li><span style="display: inline-block; width: 15px; height: 15px; background-color: #C8E6C9; margin-right: 5px;"></span> 47 - 51 dB(A)</li> <li><span style="display: inline-block; width: 15px; height: 15px; background-color: #FFEB3B; margin-right: 5px;"></span> 52 - 56 dB(A)</li> <li><span style="display: inline-block; width: 15px; height: 15px; background-color: #FFCC80; margin-right: 5px;"></span> 57 - 61 dB(A)</li> <li><span style="display: inline-block; width: 15px; height: 15px; background-color: #FF9800; margin-right: 5px;"></span> 62 - 66 dB(A)</li> <li><span style="display: inline-block; width: 15px; height: 15px; background-color: #FF5722; margin-right: 5px;"></span> 67 dB(A) or above</li> <li><span style="display: inline-block; width: 15px; height: 15px; background-color: yellow; border-radius: 50%; margin-right: 5px;"></span> Receptors</li> </ul>	<ul style="list-style-type: none"> <li><span style="display: inline-block; width: 15px; height: 15px; background-color: #2196F3; border-radius: 50%; margin-right: 5px;"></span> Mobile Plant</li> <li><span style="display: inline-block; width: 15px; height: 15px; background-color: #00BCD4; border-bottom: 2px solid #00BCD4; margin-right: 5px;"></span> Haul Road</li> <li><span style="display: inline-block; width: 15px; height: 15px; background-color: #FFCC80; border: 1px solid #FFCC80; margin-right: 5px;"></span> Stockpiles</li> <li><span style="display: inline-block; width: 15px; height: 15px; background-color: #FF9800; border: 1px solid #FF9800; margin-right: 5px;"></span> Processing Plant</li> <li><span style="display: inline-block; width: 15px; height: 15px; border-bottom: 1px dashed black; margin-right: 5px;"></span> Mine Area</li> <li><span style="display: inline-block; width: 15px; height: 15px; border: 1px solid black; border-radius: 50%; margin-right: 5px;"></span> Fixed Facilities</li> </ul>	<p><b>Yr7 Dredge Mining (Night)</b>  <b>Mine Operation and Processing Plant</b>  <i>Normal weather conditions</i></p>		<p><b>Figure 3-2</b></p>	
		<p>PROJECT ID: 60619931          CREATED BY: JC          LAST MODIFIED: 03 February 2020</p>			



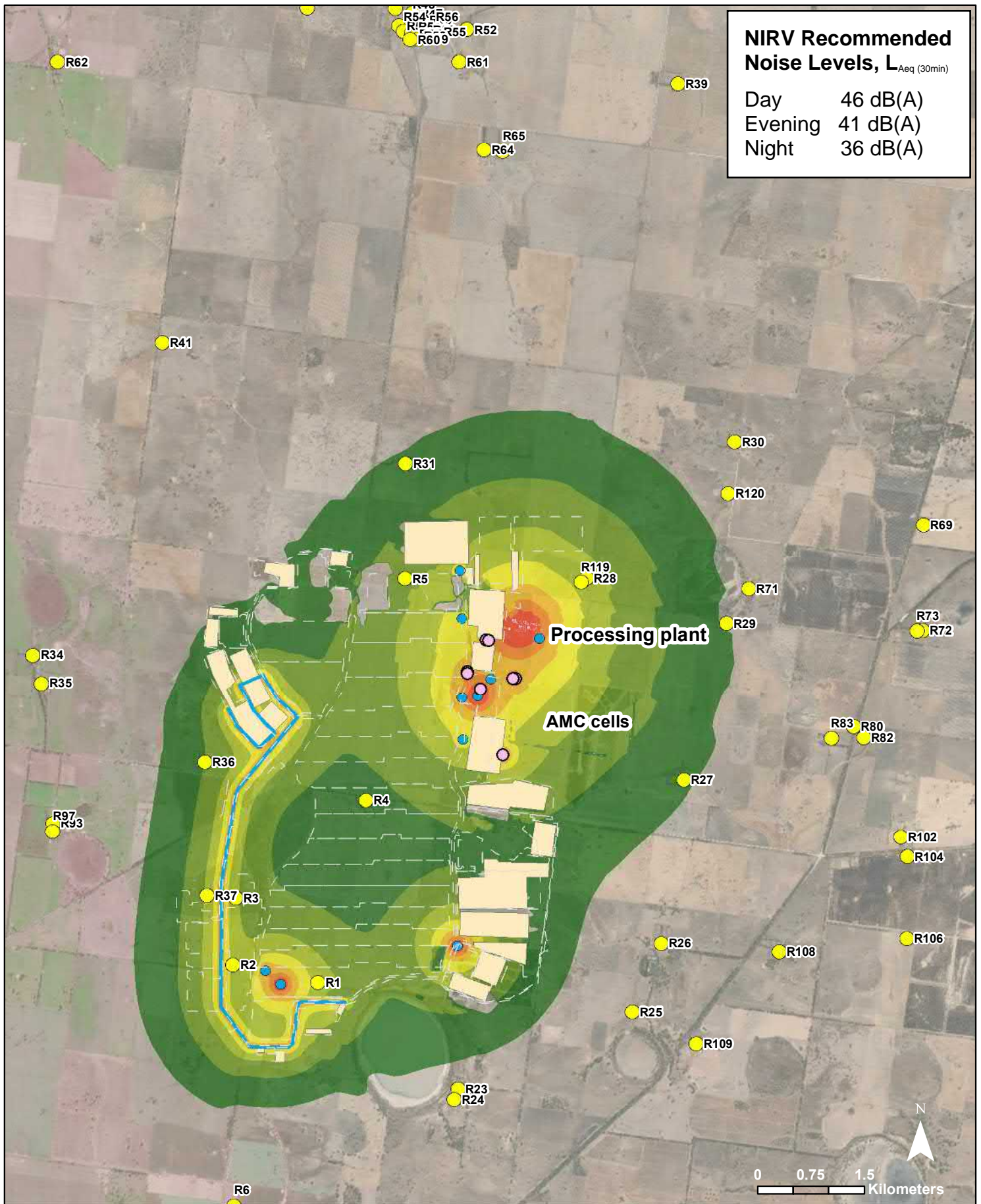


**NIRV Recommended Noise Levels,  $L_{Aeq}$  (30min)**

Day 46 dB(A)  
 Evening 41 dB(A)  
 Night 36 dB(A)

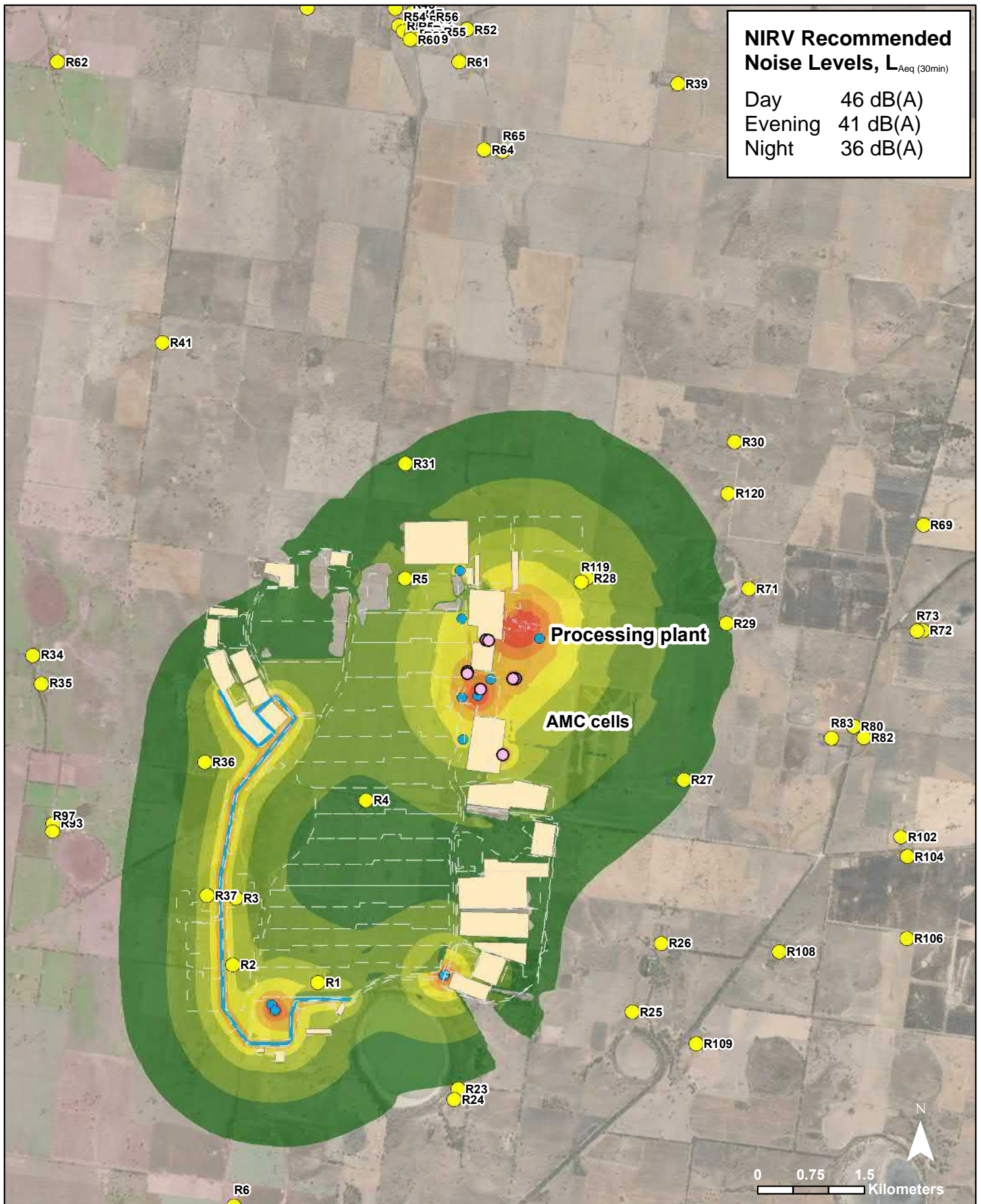
<b>Legend</b>		<b>Wimmera Project</b>		<b>AECOM</b>	
<ul style="list-style-type: none"> <li><span style="display: inline-block; width: 15px; height: 15px; border: 1px solid black; background-color: white;"></span> Less than 36 dB(A)</li> <li><span style="display: inline-block; width: 15px; height: 15px; background-color: #2e8b57;"></span> 37 - 41 dB(A)</li> <li><span style="display: inline-block; width: 15px; height: 15px; background-color: #3cb371;"></span> 42 - 46 dB(A)</li> <li><span style="display: inline-block; width: 15px; height: 15px; background-color: #76c73a;"></span> 47 - 51 dB(A)</li> <li><span style="display: inline-block; width: 15px; height: 15px; background-color: #ffff00;"></span> 52 - 56 dB(A)</li> <li><span style="display: inline-block; width: 15px; height: 15px; background-color: #ffa500;"></span> 57 - 61 dB(A)</li> <li><span style="display: inline-block; width: 15px; height: 15px; background-color: #ff8c00;"></span> 62 - 66 dB(A)</li> <li><span style="display: inline-block; width: 15px; height: 15px; background-color: #ff4500;"></span> 67 dB(A) or above</li> <li><span style="display: inline-block; width: 15px; height: 15px; background-color: #ffff00; border-radius: 50%;"></span> Receptors</li> </ul>	<ul style="list-style-type: none"> <li><span style="display: inline-block; width: 15px; height: 15px; background-color: #00b0f0; border-radius: 50%;"></span> Mobile Plant</li> <li><span style="display: inline-block; width: 15px; height: 15px; background-color: #00b0f0; border-bottom: 2px solid #00b0f0;"></span> Haul Road</li> <li><span style="display: inline-block; width: 15px; height: 15px; background-color: #f4a460;"></span> Stockpiles</li> <li><span style="display: inline-block; width: 15px; height: 15px; background-color: #ffb6c1;"></span> Processing Plant</li> <li><span style="display: inline-block; width: 15px; height: 15px; border-bottom: 1px dashed black;"></span> Mine Area</li> <li><span style="display: inline-block; width: 15px; height: 15px; border: 1px solid black; border-radius: 50%;"></span> Fixed Facilities</li> </ul>	<p><b>Yr13 Dredge Mining (Night)</b>          Mine Operation and Processing Plant  <i>Normal weather conditions</i></p>		<p><b>Figure 3-3</b></p>	
		<p>PROJECT ID 60619931          CREATED BY JC          LAST MODIFIED 03 February 2020</p>			





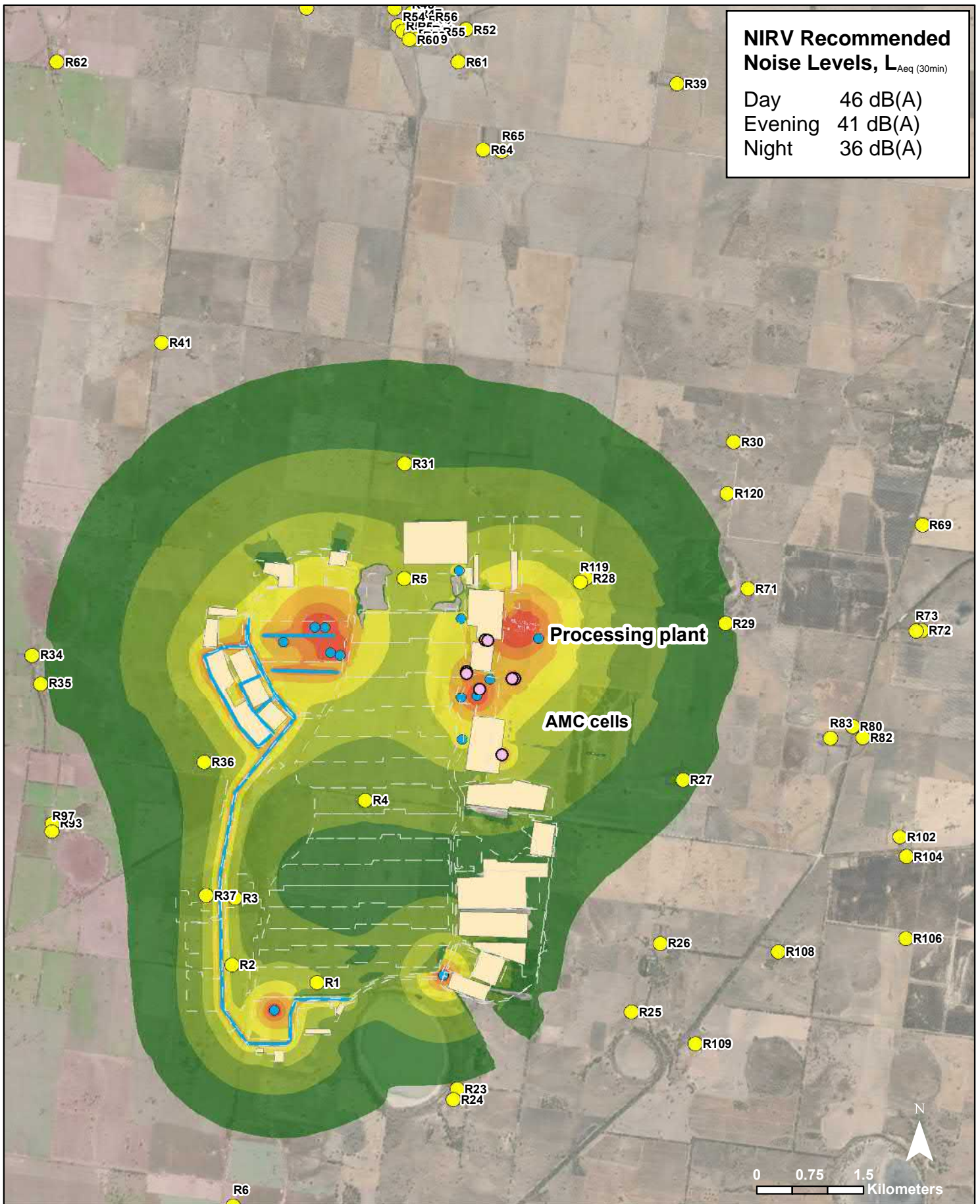
<b>Legend</b>		<b>Wimmera Project</b>		<b>AECOM</b>	
Less than 36 dB(A)	52 - 56 dB(A)	● Mobile Plant	<b>Yr16 Dredge Mining (Night)</b> Mine Operation and Processing Plant <i>Normal weather conditions</i>		
37 - 41 dB(A)	57 - 61 dB(A)	— Haul Road			
42 - 46 dB(A)	62 - 66 dB(A)	■ Stockpiles			
47 - 51 dB(A)	67 dB(A) or above	■ Processing Plant			
● Receptors	● Fixed Facilities	— Mine Area	PROJECT ID	60619931	<b>Figure 3-4</b>
			CREATED BY	JC	
			LAST MODIFIED	03 February 2020	





<b>Legend</b>		<b>Wimmera Project</b>		<b>AECOM</b>	
Less than 36 dB(A)	52 - 56 dB(A)	Mobile Plant	<b>Yr17A Dredge Mining (Night)</b> Mine Operation and Processing Plant <i>Normal weather conditions</i>		
37 - 41 dB(A)	57 - 61 dB(A)	Haul Road			
42 - 46 dB(A)	62 - 66 dB(A)	Stockpiles			
47 - 51 dB(A)	67 dB(A) or above	Processing Plant			
	Receptors	Mine Area	PROJECT ID	60619931	<b>Figure 3-5</b>
		Fixed Facilities	CREATED BY	JC	
			LAST MODIFIED	03 February 2020	



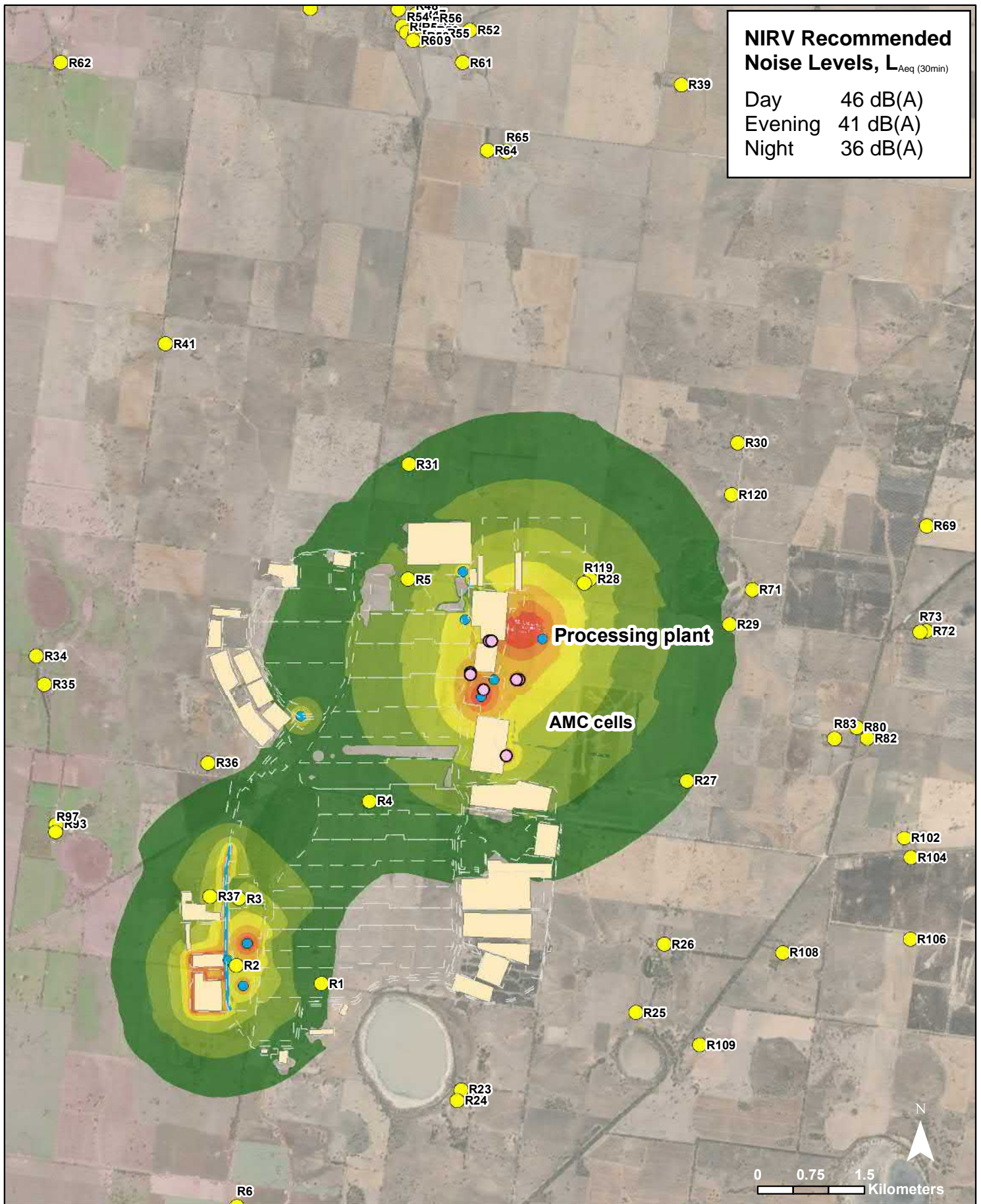


**NIRV Recommended Noise Levels,  $L_{Aeq}$  (30min)**

Day	46 dB(A)
Evening	41 dB(A)
Night	36 dB(A)

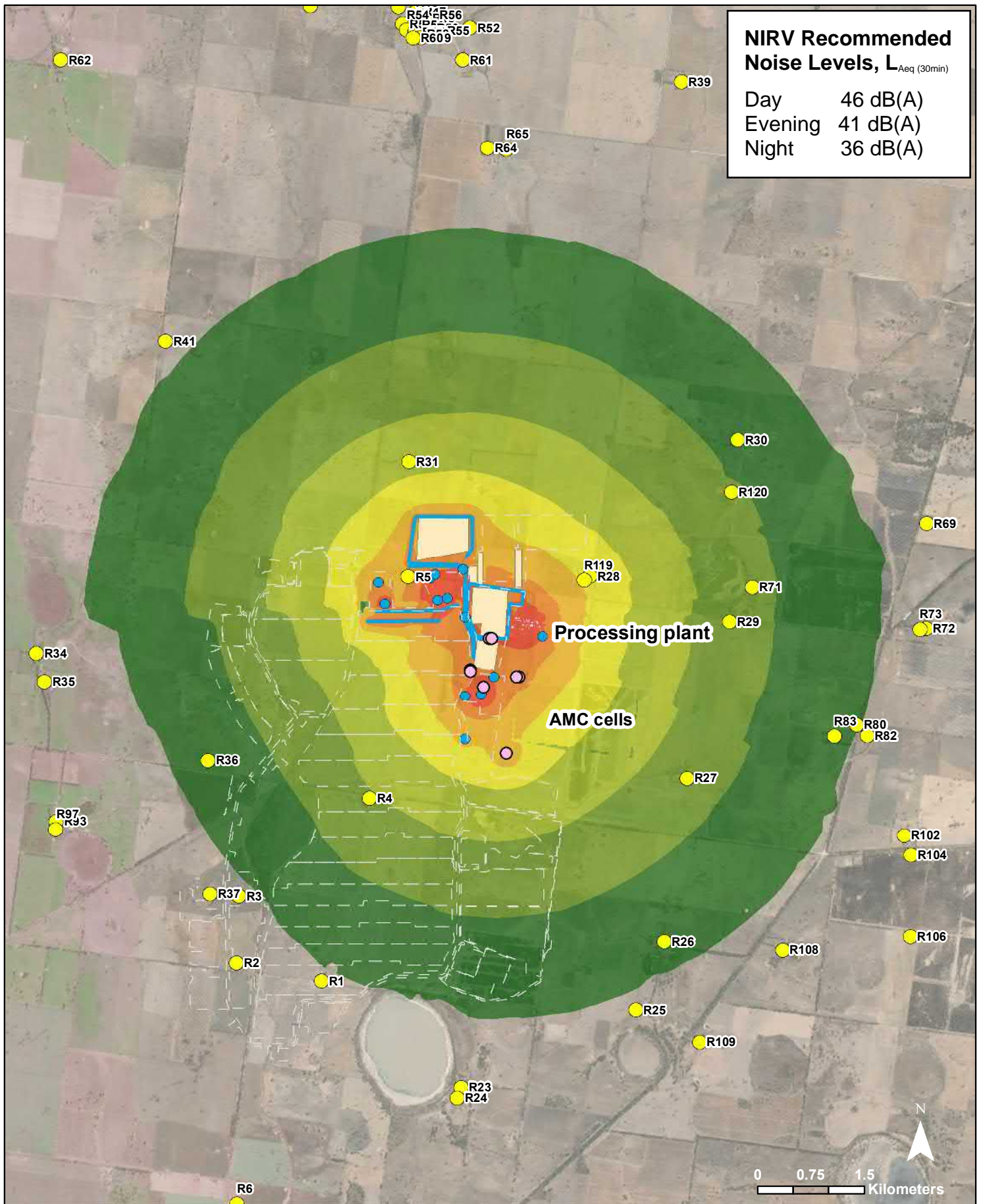
<b>Legend</b>		<b>Wimmera Project</b>		<b>AECOM</b>	
<ul style="list-style-type: none"> <li><span style="display: inline-block; width: 15px; height: 15px; border: 1px solid black; background-color: white;"></span> Less than 36 dB(A)</li> <li><span style="display: inline-block; width: 15px; height: 15px; background-color: #2e8b57;"></span> 37 - 41 dB(A)</li> <li><span style="display: inline-block; width: 15px; height: 15px; background-color: #4caf50;"></span> 42 - 46 dB(A)</li> <li><span style="display: inline-block; width: 15px; height: 15px; background-color: #8bc34a;"></span> 47 - 51 dB(A)</li> <li><span style="display: inline-block; width: 15px; height: 15px; background-color: #ffeb3b;"></span> 52 - 56 dB(A)</li> <li><span style="display: inline-block; width: 15px; height: 15px; background-color: #ffc107;"></span> 57 - 61 dB(A)</li> <li><span style="display: inline-block; width: 15px; height: 15px; background-color: #ff9800;"></span> 62 - 66 dB(A)</li> <li><span style="display: inline-block; width: 15px; height: 15px; background-color: #ff5722;"></span> 67 dB(A) or above</li> <li><span style="display: inline-block; width: 10px; height: 10px; background-color: yellow; border-radius: 50%;"></span> Receptors</li> </ul>	<ul style="list-style-type: none"> <li><span style="display: inline-block; width: 10px; height: 10px; background-color: blue; border-radius: 50%;"></span> Mobile Plant</li> <li><span style="display: inline-block; width: 15px; border-bottom: 2px solid blue;"></span> Haul Road</li> <li><span style="display: inline-block; width: 15px; height: 15px; background-color: #f5deb3; border: 1px solid black;"></span> Stockpiles</li> <li><span style="display: inline-block; width: 15px; height: 15px; background-color: #e91e63; border: 1px solid black;"></span> Processing Plant</li> <li><span style="display: inline-block; width: 15px; border-bottom: 1px dashed gray;"></span> Mine Area</li> <li><span style="display: inline-block; width: 10px; height: 10px; border: 1px solid purple; border-radius: 50%;"></span> Fixed Facilities</li> </ul>	<p><b>Yr17B Dredge Mining (Night)</b>          Mine Operation and Processing Plant  <i>Normal weather conditions</i></p>		<p><b>Figure 3-6</b></p>	
		<p>PROJECT ID: 60619931          CREATED BY: JC          LAST MODIFIED: 03 February 2020</p>			





<b>Legend</b>		<b>Wimmera Project</b>		<b>AECOM</b>	
Less than 36 dB(A)	52 - 56 dB(A)	Mobile Plant	<b>Yr19 Dredge Mining (Night)</b> Mine Operation and Processing Plant <i>Normal weather conditions</i>		
37 - 41 dB(A)	57 - 61 dB(A)	Haul Road			
42 - 46 dB(A)	62 - 66 dB(A)	Stockpiles			
47 - 51 dB(A)	67 dB(A) or above	Processing Plant			
Receptors		Mine Area	PROJECT ID	60619931	<b>Figure 3-7</b>
		Fixed Facilities	CREATED BY	JC	
			LAST MODIFIED	03 February 2020	



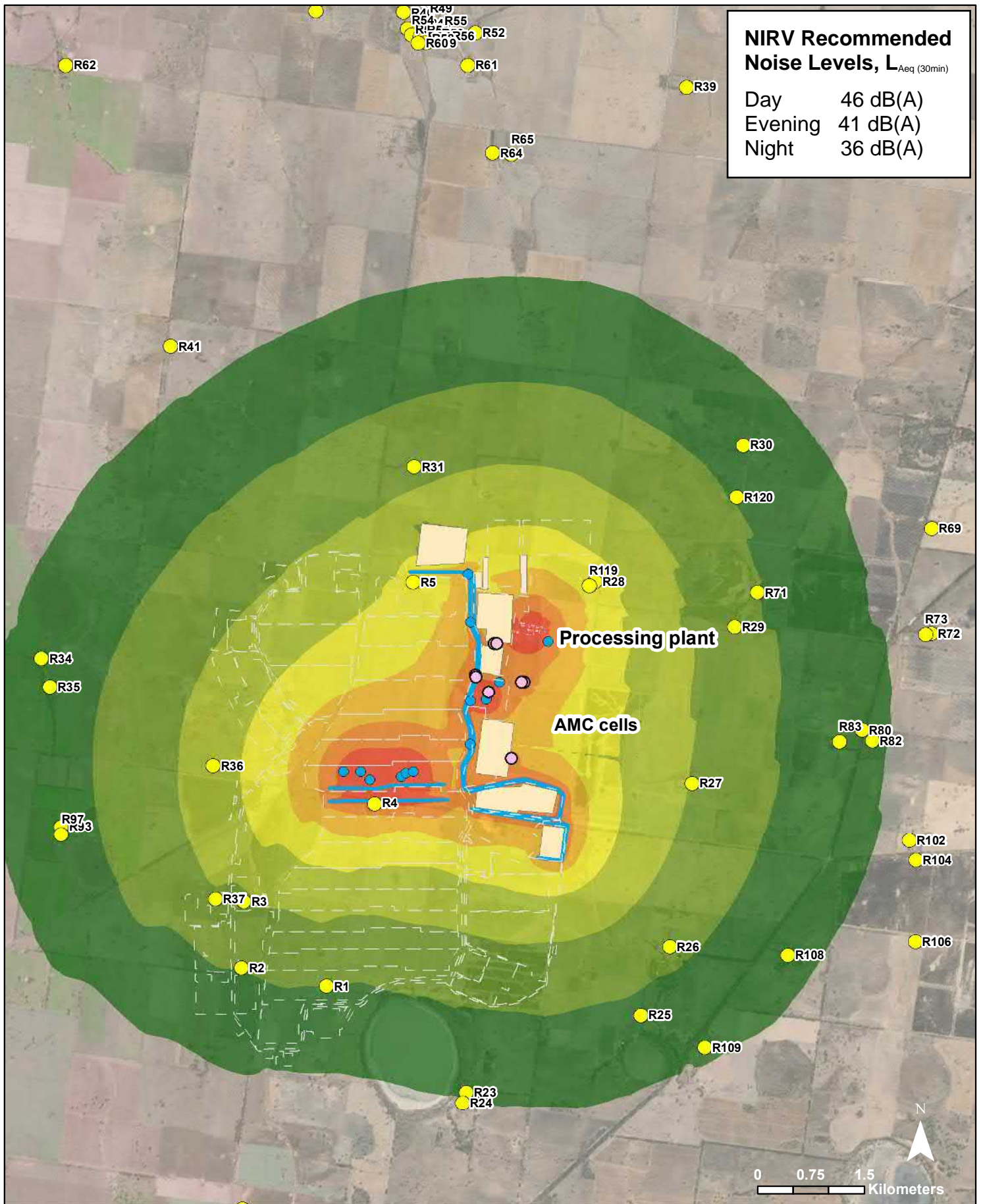


**NIRV Recommended Noise Levels,  $L_{Aeq}$  (30min)**

Day	46 dB(A)
Evening	41 dB(A)
Night	36 dB(A)

<b>Legend</b>		<b>Wimmera Project</b>		<b>AECOM</b>	
<ul style="list-style-type: none"> <li><span style="display: inline-block; width: 15px; height: 15px; border: 1px solid black; background-color: white;"></span> Less than 36 dB(A)</li> <li><span style="display: inline-block; width: 15px; height: 15px; background-color: #388e3c;"></span> 37 - 41 dB(A)</li> <li><span style="display: inline-block; width: 15px; height: 15px; background-color: #5499c7;"></span> 42 - 46 dB(A)</li> <li><span style="display: inline-block; width: 15px; height: 15px; background-color: #76c73a;"></span> 47 - 51 dB(A)</li> <li><span style="display: inline-block; width: 15px; height: 15px; background-color: #ffff00;"></span> 52 - 56 dB(A)</li> <li><span style="display: inline-block; width: 15px; height: 15px; background-color: #ffcc00;"></span> 57 - 61 dB(A)</li> <li><span style="display: inline-block; width: 15px; height: 15px; background-color: #ff9900;"></span> 62 - 66 dB(A)</li> <li><span style="display: inline-block; width: 15px; height: 15px; background-color: #ff6600;"></span> 67 dB(A) or above</li> <li><span style="display: inline-block; width: 10px; height: 10px; background-color: yellow; border-radius: 50%;"></span> Receptors</li> </ul>	<ul style="list-style-type: none"> <li><span style="display: inline-block; width: 10px; height: 10px; background-color: blue; border-radius: 50%;"></span> Mobile Plant</li> <li><span style="display: inline-block; width: 15px; height: 2px; background-color: blue;"></span> Haul Road</li> <li><span style="display: inline-block; width: 15px; height: 15px; background-color: #f4b084; border: 1px solid black;"></span> Stockpiles</li> <li><span style="display: inline-block; width: 15px; height: 15px; background-color: #e91e63; border: 1px solid black;"></span> Processing Plant</li> <li><span style="display: inline-block; width: 15px; border-bottom: 1px dashed gray;"></span> Mine Area</li> <li><span style="display: inline-block; width: 10px; height: 10px; border: 1px solid black; border-radius: 50%;"></span> Fixed Facilities</li> </ul>	<p><b>Yr1 Dredge Mining (Night)</b>  <b>Mine Operation and Processing Plant</b>  <i>Adverse weather conditions</i></p>		<p><b>Figure 3-8</b></p>	
		<p>PROJECT ID: 60619931          CREATED BY: JC          LAST MODIFIED: 03 February 2020</p>			



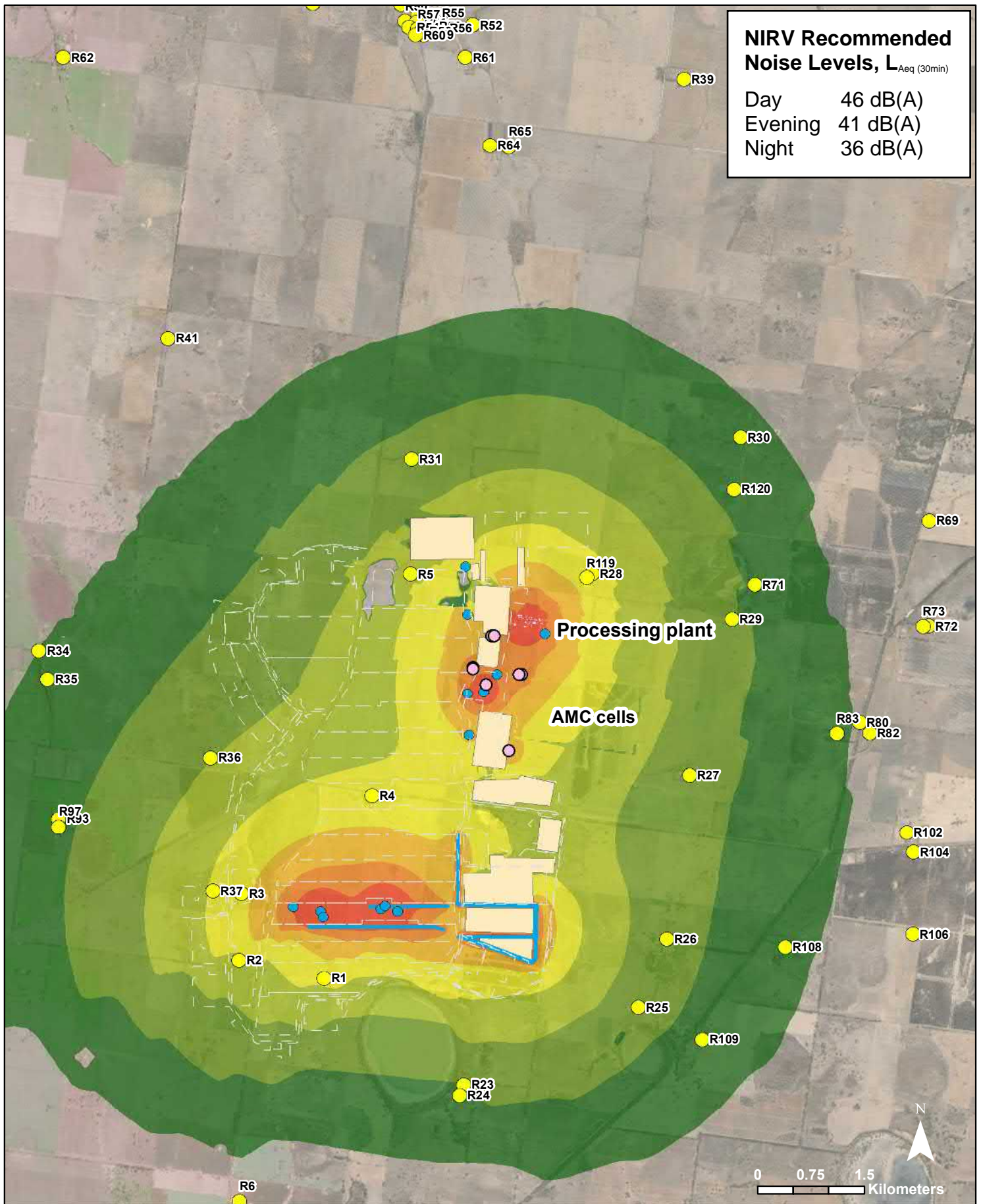


**NIRV Recommended Noise Levels,  $L_{Aeq}$  (30min)**

Day	46 dB(A)
Evening	41 dB(A)
Night	36 dB(A)

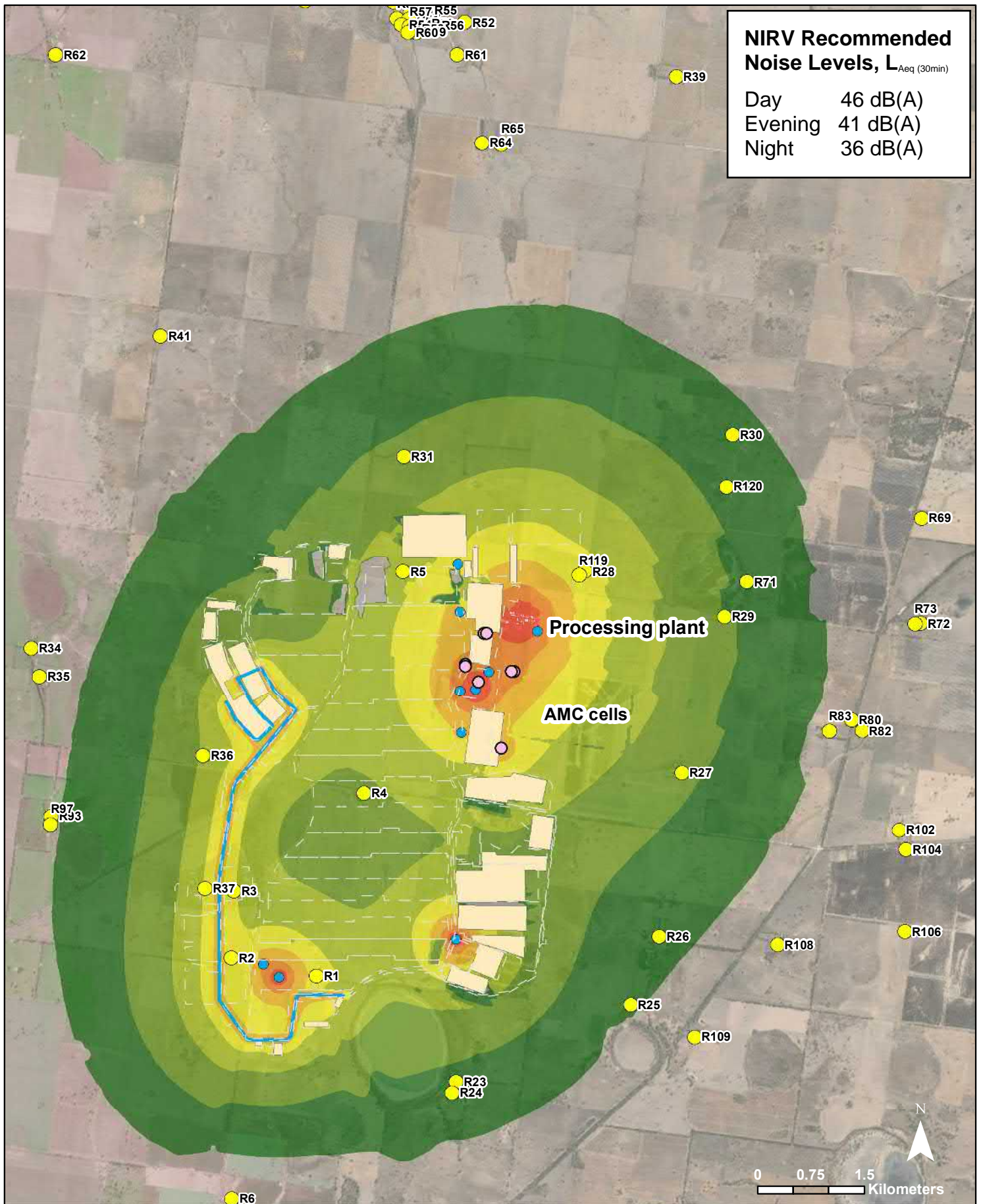
<b>Legend</b>		<b>Wimmera Project</b>		<b>AECOM</b>	
<ul style="list-style-type: none"> <li><span style="display: inline-block; width: 15px; height: 15px; border: 1px solid black; background-color: white;"></span> Less than 36 dB(A)</li> <li><span style="display: inline-block; width: 15px; height: 15px; background-color: #4CAF50;"></span> 37 - 41 dB(A)</li> <li><span style="display: inline-block; width: 15px; height: 15px; background-color: #8BC34A;"></span> 42 - 46 dB(A)</li> <li><span style="display: inline-block; width: 15px; height: 15px; background-color: #C8E6C9;"></span> 47 - 51 dB(A)</li> </ul>	<ul style="list-style-type: none"> <li><span style="display: inline-block; width: 15px; height: 15px; background-color: #FFF9C4;"></span> 52 - 56 dB(A)</li> <li><span style="display: inline-block; width: 15px; height: 15px; background-color: #FFCC80;"></span> 57 - 61 dB(A)</li> <li><span style="display: inline-block; width: 15px; height: 15px; background-color: #FF9800;"></span> 62 - 66 dB(A)</li> <li><span style="display: inline-block; width: 15px; height: 15px; background-color: #FF5722;"></span> 67 dB(A) or above</li> </ul>	<ul style="list-style-type: none"> <li><span style="display: inline-block; width: 10px; height: 10px; background-color: #2196F3; border-radius: 50%;"></span> Mobile Plant</li> <li><span style="display: inline-block; width: 15px; height: 2px; background-color: #00BCD4;"></span> Haul Road</li> <li><span style="display: inline-block; width: 15px; height: 15px; background-color: #FFCC99; border: 1px solid black;"></span> Stockpiles</li> <li><span style="display: inline-block; width: 15px; height: 15px; background-color: #FFB74D; border: 1px solid black;"></span> Processing Plant</li> <li><span style="display: inline-block; width: 15px; border-bottom: 1px dashed black;"></span> Mine Area</li> <li><span style="display: inline-block; width: 10px; height: 10px; border: 1px solid black; border-radius: 50%;"></span> Fixed Facilities</li> <li><span style="display: inline-block; width: 10px; height: 10px; background-color: #FFEB3B; border-radius: 50%;"></span> Receptors</li> </ul>	<p><b>Yr7 Dredge Mining (Night)</b>  <b>Mine Operation and Processing Plant</b>  <i>Adverse weather conditions</i></p>		<p><b>Figure 3-9</b></p>
		<p>PROJECT ID: 60619931          CREATED BY: JC          LAST MODIFIED: 03 February 2020</p>			





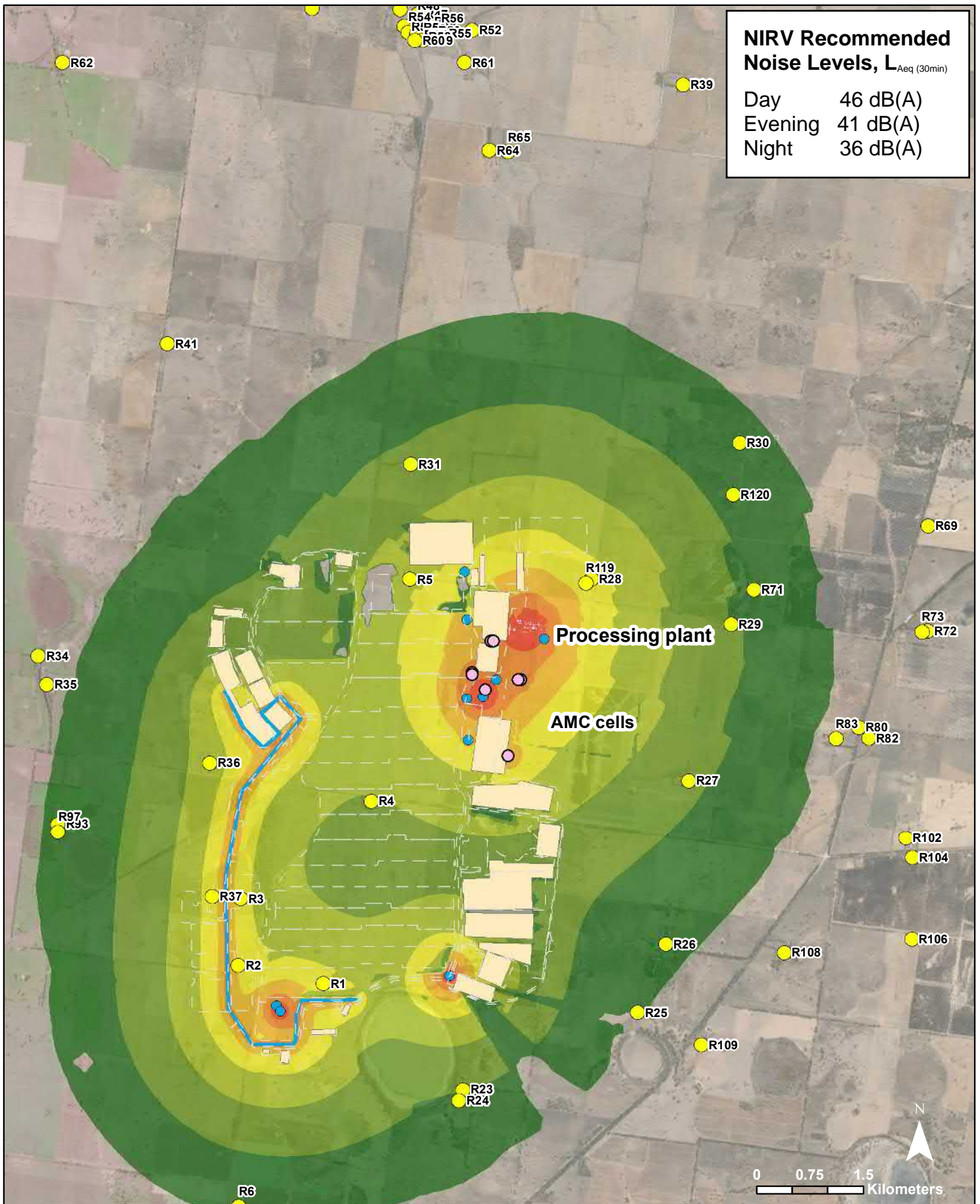
<b>Legend</b>		<b>Wimmera Project</b>		<b>AECOM</b>	
Less than 36 dB(A)	52 - 56 dB(A)	Mobile Plant	<b>Yr13 Dredge Mining (Night)</b> Mine Operation and Processing Plant <i>Adverse weather conditions</i>		
37 - 41 dB(A)	57 - 61 dB(A)	Haul Road			
42 - 46 dB(A)	62 - 66 dB(A)	Stockpiles	PROJECT ID 60619931		<b>Figure 3-10</b>
47 - 51 dB(A)	67 dB(A) or above	Processing Plant	CREATED BY JC		
Receptors	Fixed Facilities	Mine Area	LAST MODIFIED 03 February 2020		





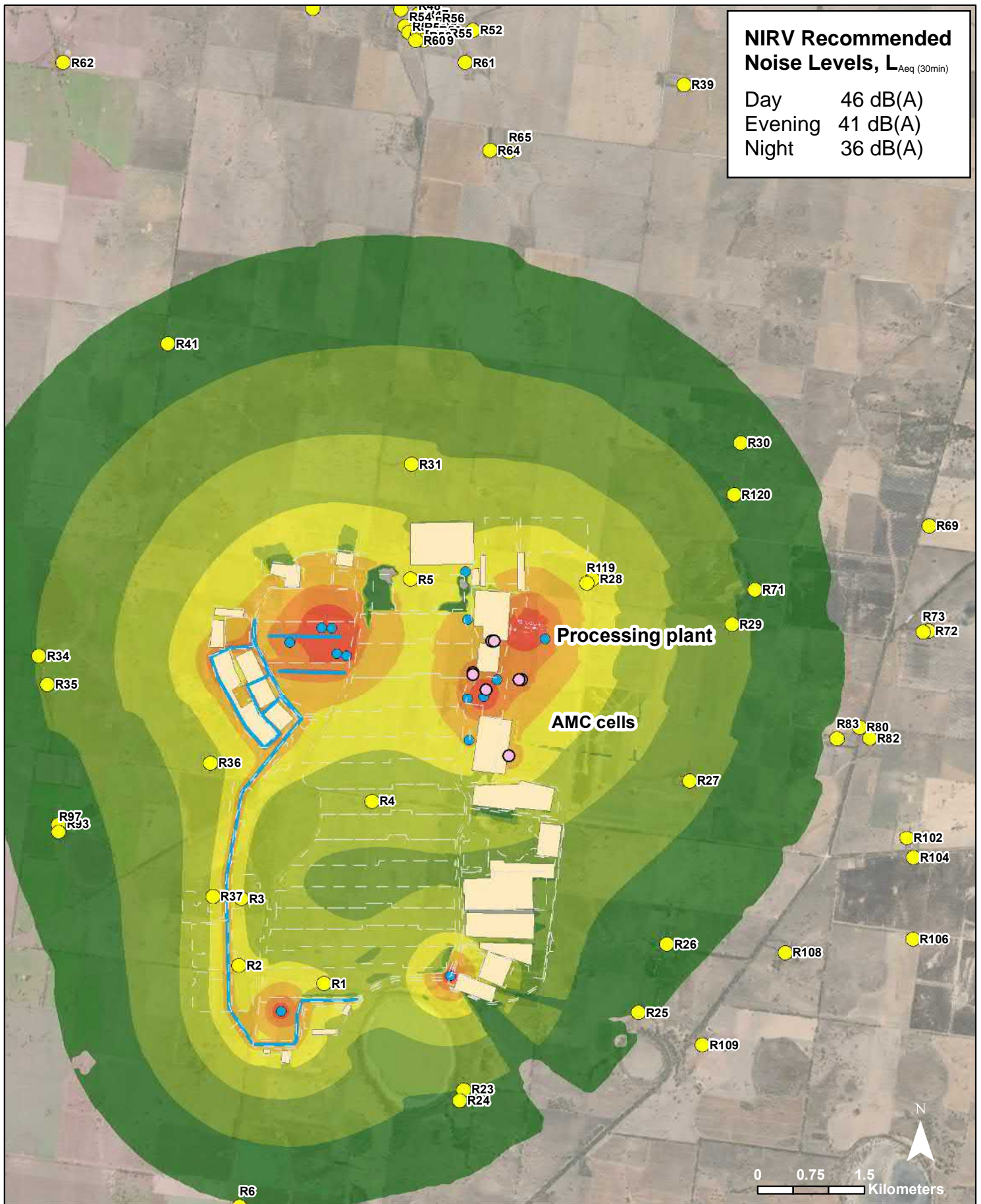
<b>Legend</b>		<b>Wimmera Project</b>		<b>AECOM</b>
Less than 36 dB(A)	52 - 56 dB(A)	Mobile Plant	<b>Yr16 Dredge Mining (Night)</b> Mine Operation and Processing Plant <i>Adverse weather conditions</i>	
37 - 41 dB(A)	57 - 61 dB(A)	Haul Road		
42 - 46 dB(A)	62 - 66 dB(A)	Stockpiles		
47 - 51 dB(A)	67 dB(A) or above	Processing Plant	PROJECT ID 60619931 CREATED BY JC LAST MODIFIED 03 February 2020	
Receptors	Fixed Facilities	Mine Area	<b>Figure 3-11</b>	





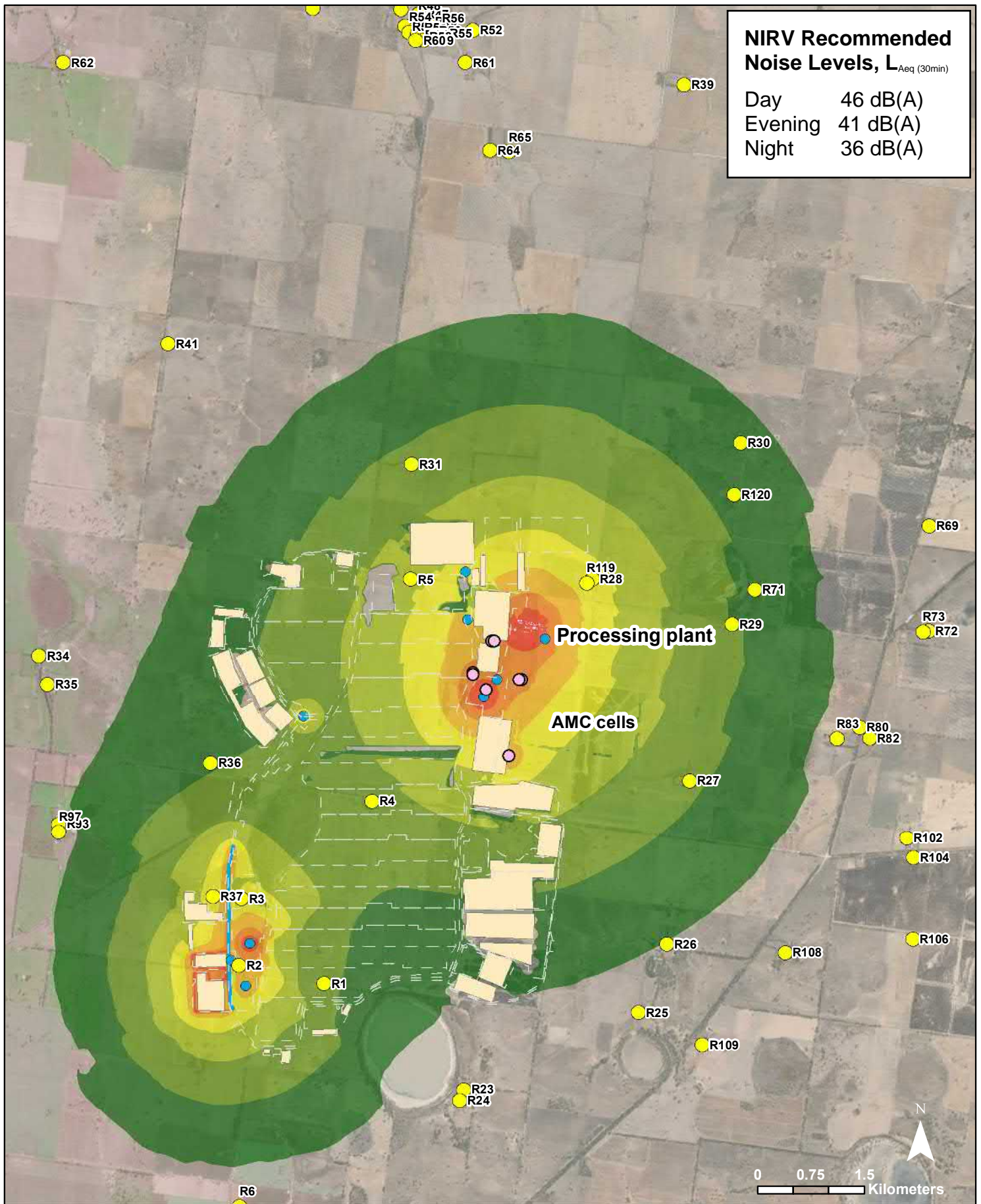
<b>Legend</b>		<b>Wimmera Project</b>		<b>AECOM</b>	
Less than 36 dB(A)	52 - 56 dB(A)	Mobile Plant	<b>Yr17A Dredge Mining (Night)</b> Mine Operation and Processing Plant <i>Adverse weather conditions</i>		
37 - 41 dB(A)	57 - 61 dB(A)	Haul Road			
42 - 46 dB(A)	62 - 66 dB(A)	Stockpiles			
47 - 51 dB(A)	67 dB(A) or above	Processing Plant			
Receptors		Mine Area	PROJECT ID	60619931	<b>Figure 3-12</b>
		Fixed Facilities	CREATED BY	JC	
			LAST MODIFIED	03 February 2020	





<b>Legend</b>		<b>Wimmera Project</b>		<b>AECOM</b>	
Less than 36 dB(A)	52 - 56 dB(A)	Mobile Plant	<b>Yr17B Dredge Mining (Night)</b> Mine Operation and Processing Plant <i>Adverse weather conditions</i>		
37 - 41 dB(A)	57 - 61 dB(A)	Haul Road			
42 - 46 dB(A)	62 - 66 dB(A)	Stockpiles			
47 - 51 dB(A)	67 dB(A) or above	Processing Plant			
Receptors	Fixed Facilities	Mine Area			
PROJECT ID 60619931			Figure 3-13		
CREATED BY JC			LAST MODIFIED 03 February 2020		





<b>Legend</b>		<b>Wimmera Project</b>		<b>AECOM</b>
Less than 36 dB(A)	52 - 56 dB(A)	Mobile Plant	<b>Yr19 Dredge Mining (Night)</b> Mine Operation and Processing Plant <i>Adverse weather conditions</i>	
37 - 41 dB(A)	57 - 61 dB(A)	Haul Road		
42 - 46 dB(A)	62 - 66 dB(A)	Stockpiles		
47 - 51 dB(A)	67 dB(A) or above	Processing Plant		
	Receptors	Mine Area	PROJECT ID 60619931	<b>Figure 3-14</b>
		Fixed Facilities	CREATED BY JC	
			LAST MODIFIED 03 February 2020	