



ILUKA

International Mining and Resources Conference 22 – 26 September 2014



Rob Hattingh

General Manager Innovation, Technology and Sustainability

Iluka Resources Limited

24 September 2014

Disclaimer – Forward Looking Statements



Forward Looking Statements

This presentation contains certain statements which constitute “forward-looking statements”. These statements include, without limitation, estimates of future production and production potential; estimates of future capital expenditure and cash costs; estimates of future product supply, demand and consumption; statements regarding future product prices; and statements regarding the expectation of future Mineral Resources and Ore Reserves.

Where Iluka expresses or implies an expectation or belief as to future events or results, such expectation or belief is expressed in good faith and on a reasonable basis. No representation or warranty, express or implied, is made by Iluka that the matters stated in this presentation will in fact be achieved or prove to be correct.

Forward-looking statements are only predictions and are subject to risks, uncertainties and other factors, which could cause actual results to differ materially from future results expressed, projected or implied by such forward-looking statements. Such risks and factors include, but are not limited to:

- changes in exchange rate assumptions;
- changes in product pricing assumptions;
- major changes in mine plans and/or resources;
- changes in equipment life or capability;
- emergence of previously underestimated technical challenges; and
- environmental or social factors which may affect a licence to operate.

Except for statutory liability which cannot be excluded, Iluka, its officers, employees and advisers expressly disclaim any responsibility for the accuracy or completeness of the material contained in this presentation and exclude all liability whatsoever (including in negligence) for any loss or damage which may be suffered by any person as a consequence of any information in this presentation or any error or omission there from.

Iluka does not undertake any obligation to release publicly any revisions to any forward-looking statement to reflect events or circumstances after the date of this presentation, or to reflect the occurrence of unanticipated events, except as may be required under applicable securities laws.

Non-IFRS Financial Information

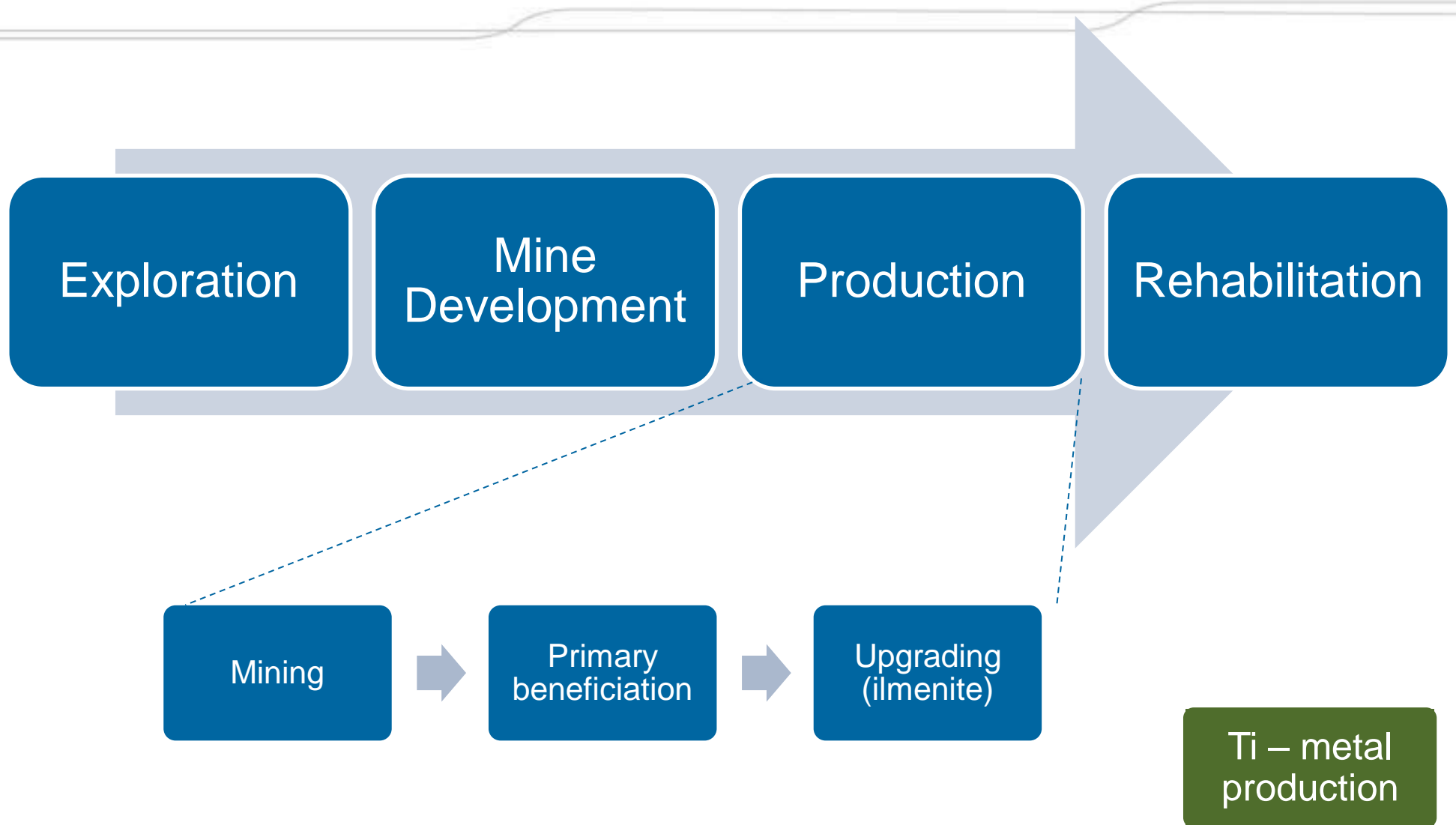
This presentation uses non-IFRS financial information including mineral sands EBITDA, mineral sands EBIT, Group EBITDA and Group EBIT which are used to measure both group and operational performance. A reconciliation of non-IFRS financial information to profit before tax is included in the supplementary slides. Non-IFRS measures have not been subject to audit or review.

Technology and Innovation Drive Step Changes



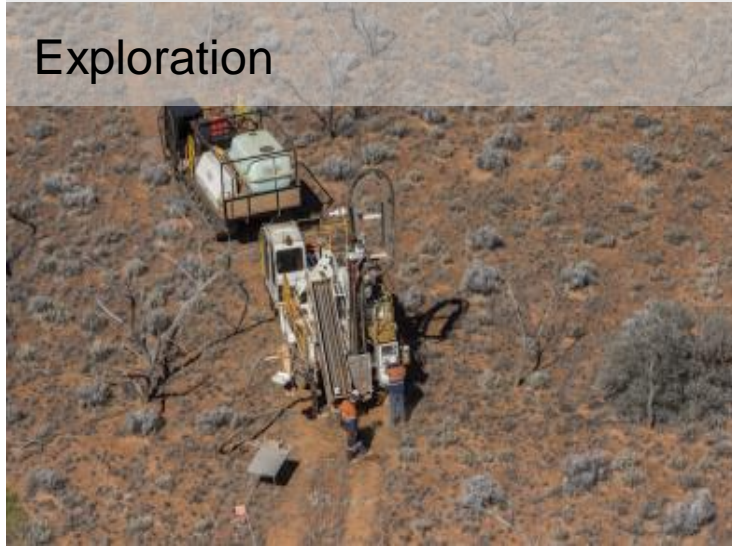
- Introduction to mineral sands
- The role of innovation – past, present and future
 - exploration
 - mine development
 - primary beneficiation
 - ilmenite upgrading
 - innovation in Ti-metal
- Conclusion

Mineral Sands Process



Mineral Sands Exploration and Mining

Exploration



Dry Mining



Dry Mining



Rehabilitation



Beneficiation

Gravity Separation



Electrostatic Separation



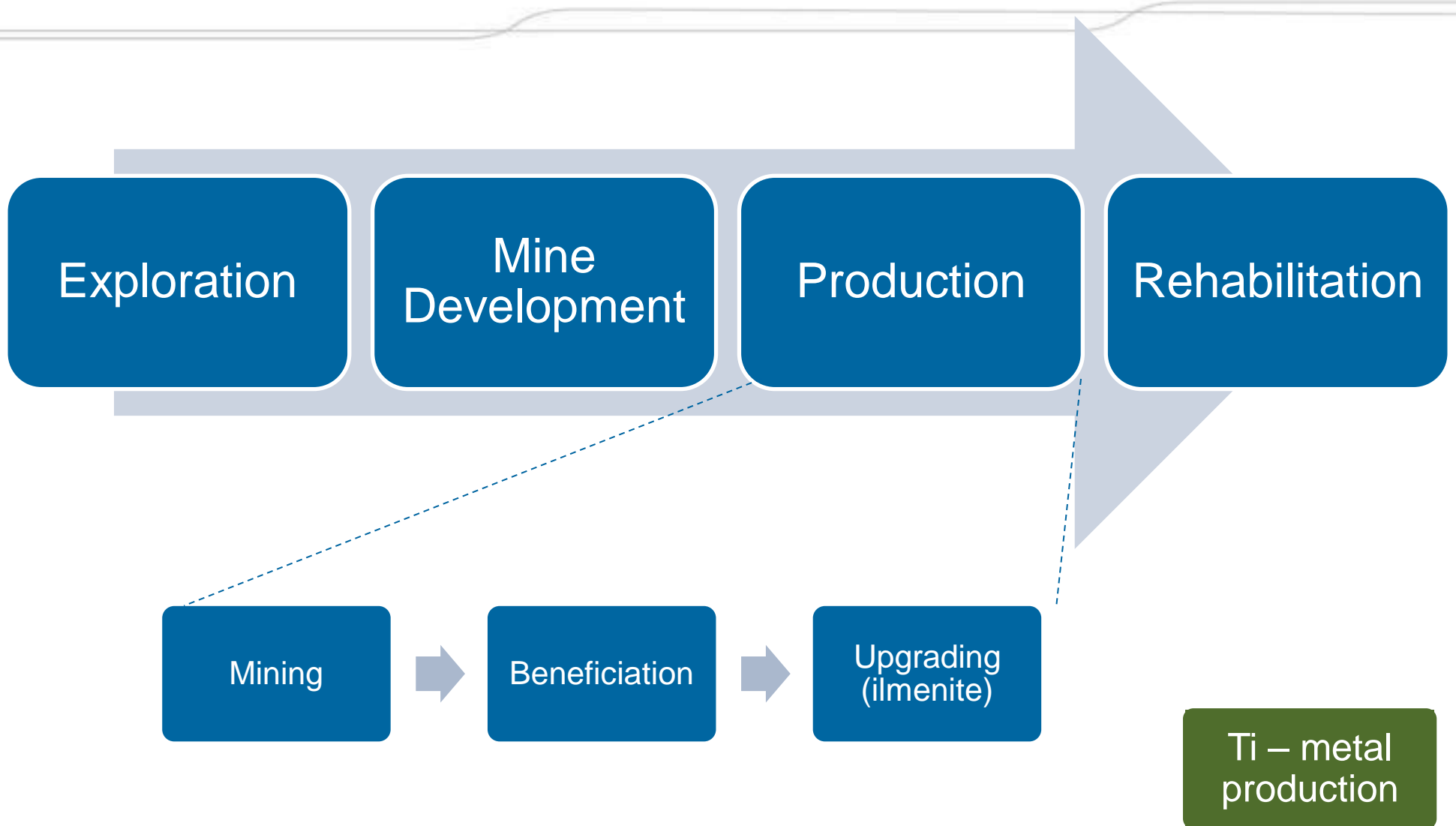
Synthetic rutile plant



Finished products



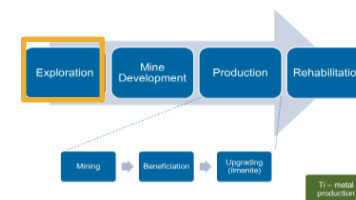
Mineral Sands Process



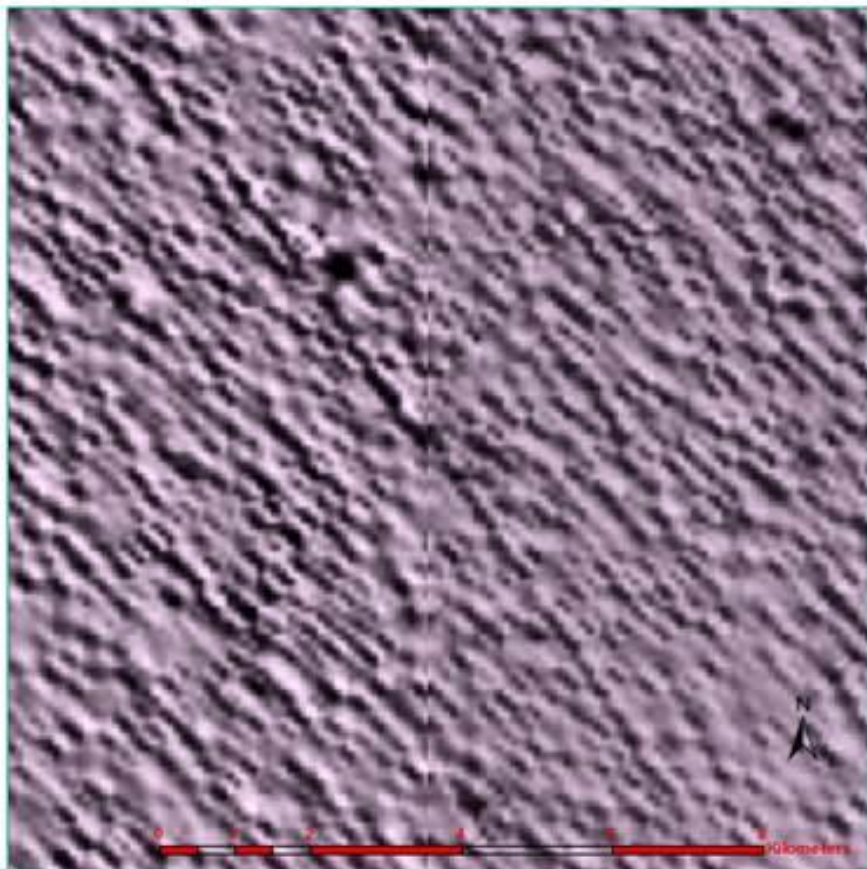
Innovation in Exploration

Decade developed	Technology	Impact on Productivity
1940s	Auger/ open hole drilling	100m/day (max)
1980s	Wallis system – air core drill	300m/day/ rig - vast improvement in quality of data - access deposits below top of water table
1997	Ouyen VIMP ¹ released	Direct discovery of the Kulwin and Woorack. HM exploration in the Murray Basin since 1960s.
2010	Use of ground magnetometer	Increase confidence in deposit morphology, decrease drilling

¹ VIMP: Victorian Initiative for Minerals & Petroleum:
Aeromagnetic Survey of the Ouyen 1: 250,000 map sheet



Exploration Innovation



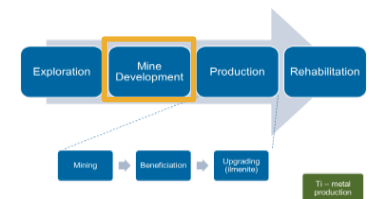
Aeromagnetic survey: Woorneck Strandline under 15+ m of cover



Ground magnetometer

Innovation in Mine Development

Decade developed	Technology	Impact on Productivity
1940s	Dredging technology adapted for mineral sands Pontoon mounted pump, land based spiral plant. Technology was further developed to include floating concentrator	Unit cost, labour force, access
1970s	Large bucket wheel excavators and back tippers	Reduction of work force and unit costs
1990s	Conveyance of bulk material	Reductions to unit cost
1990s	Gravity	Lost cost mining using natural slopes
2000s	Mobile mining units	Flexibility and blending
2000s	Modularisation	Flexibility, capex

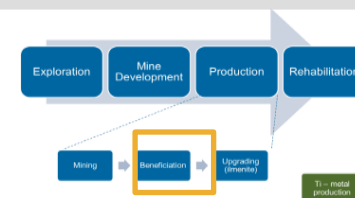


WRP Mine Move

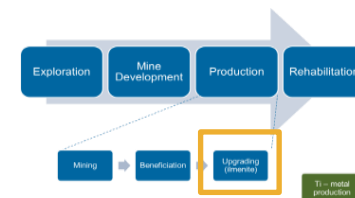
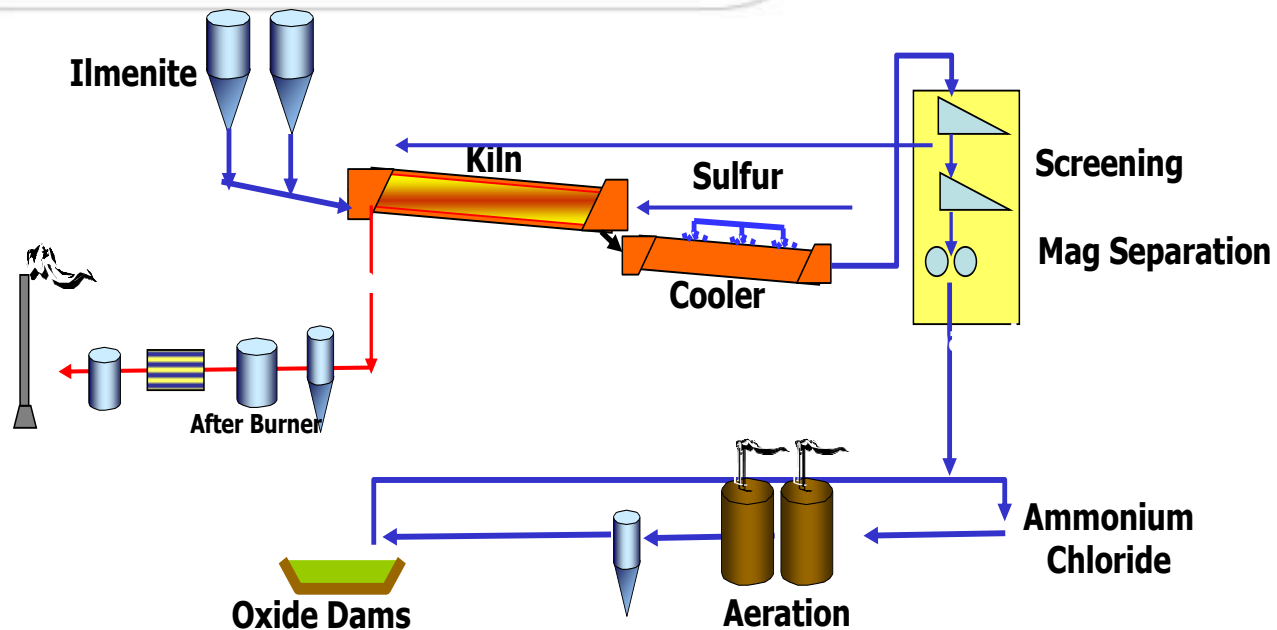


Innovation in Mineral Sand Separation

Decade developed	Technology	Impact on Productivity
1920s	Zircon Flotation	Allowed production of a refined product rather than concentrate
1930s	Wet tables	Improved selectivity e.g. monazite concentration for cerium production
1940s	Electromagnetic separators High tension roll and electrostatic plate separators	Improved separating efficiency leads to reduced unit costs and exploitation of marginal deposits
1960s	Fibreglass spiral concentrators Reichert cone concentrators	Lower manufacturing costs, improved manufacturing quality Simplified process designs Lower capital and operating costs Higher mineral recovery
1980s	Rare earth roll magnets Up-current classifiers	Increased unit capacity and improved separating efficiency added to productivity gains made in the 1960s



SR – Innovation to Meet a Market Need



Iluka Synthetic Rutile Evolution

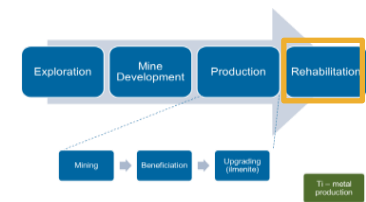


Kiln	Location	Commissioned	Decommissioned	Design Throughput Capacity	Final Throughput
'A' 10m	South Capel	1970	1993	10 ktpa	
'B' 33m	South Capel	1974	1997	30 ktpa	
SR1 68m	North Capel	1986		100 ktpa	~125 ktpa
'C' = SR3 63m	Narngulu	1988		100 ktpa	~125 ktpa
'D' = SR4 63m	Narngulu	1991		100 ktpa	~130 ktpa
SR2 90m	North Capel	1997		130 ktpa	~200 ktpa 8MW power generation

Innovation in Health, Safety and Environment



Innovation	Impact on productivity
1988: Resolution of OHS issues associated with radiation and dust in Mineral Separation Plants	Positive health impact
1970s: Methodology to successfully restore wetlands developed	Improved rehabilitation
1990s: Restoration of high dunes and preservation of perched lakes in mined out areas	Improved rehabilitation
2000s: Restoration of farm land in mined out areas (Old Hickory in the US, and Capel in WA)	Improved rehabilitation
2000s: Cultivation of recalcitrant native vegetation species at Eneabba	Improved rehabilitation
2006: Modified co-disposal of sand and slimes developed and implemented at Gingin	Water recovery doubled



Vegetation Direct Transfer



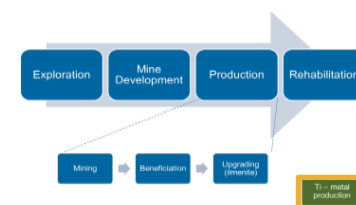
Vegetation and 30–40 cm of the intact topsoil profile is excavated...

...and transferred to a ripped subsoil surface

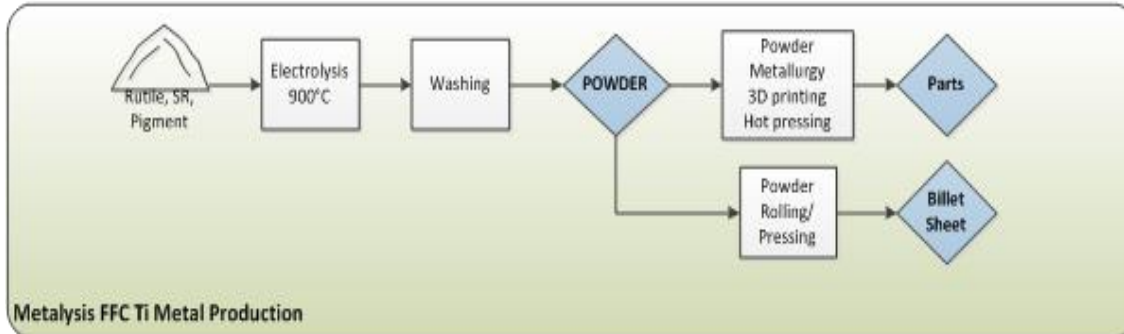
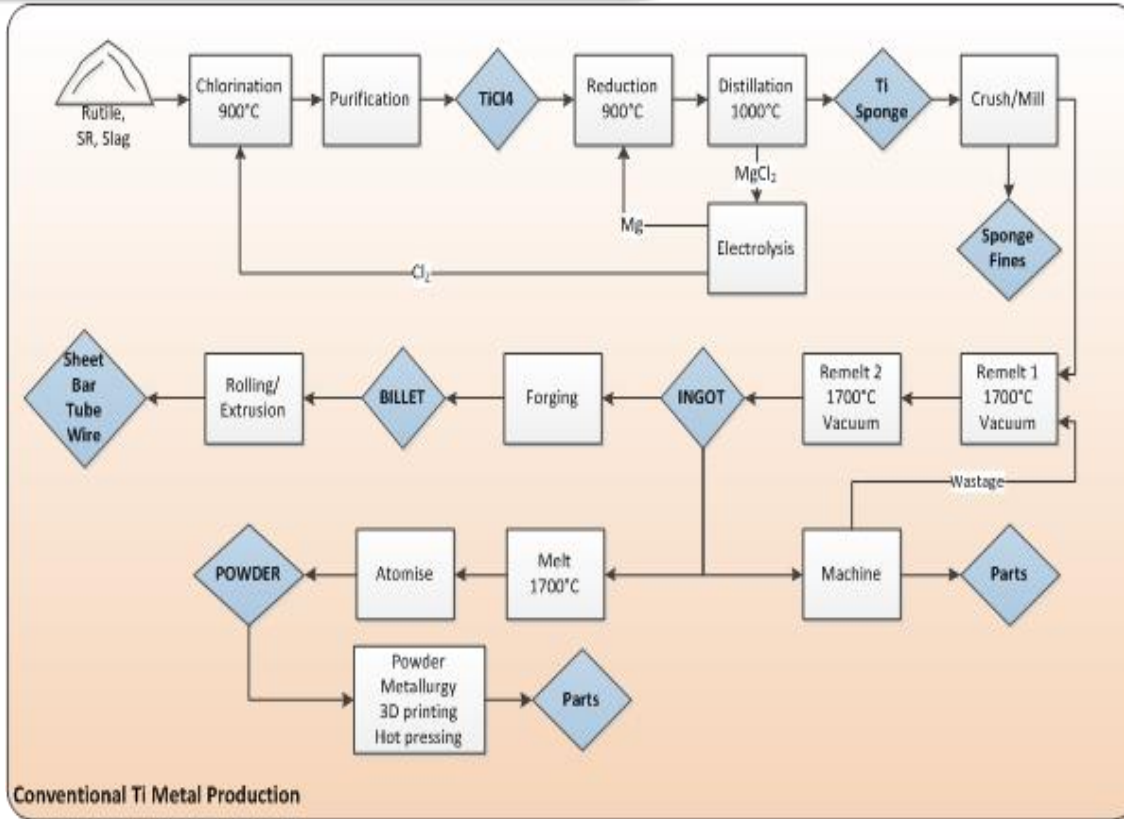


Innovation in Ti Metal

Decade developed	Technology	Impact on Productivity
1930s	Kroll process	Multiple stage, energy and labour intensive TiCl ₄ , Mg metal (liquid), multiple remelting/refining stages
1950s	Kroll process	Australian rutile used in the manufacture of titanium metal for aircraft
1990s	Metalysis	Mineral directly to metal in one step
2013	Metalysis	Mineral directly to metal in one step, Iluka invests



Ti-Metal Production



Technology	Buy-to-fly ratio
Kroll process	10:1 and higher
Metalysis	2:1 can be achieved



Factors Driving Innovation

- Desire to achieve
- Problem Solving
- Desperation / Survival
- Mistakes
- Risk Management
- Economics
- Tyranny of distance

Impact on Productivity in Mineral Sands

All aspects from exploration to final product affected by technology and innovation:

- the discovery of deposits;
- increased confidence in deposit morphology;
- reduction in cost, schedule and footprint in new mine development;
- the mining of previously uneconomic deposits by improving separation efficiency;
- the restoration of mined areas to agreed standards; and
- new growth pathways for high value metals and alloys.

Iluka Resources Limited

www.iluka.com

For more information, contact:

Robert Porter, General Manager Investor Relations

robert.porter@iluka.com

+61 3 9225 5008 / +61 (0) 407 391 829