

# SHEET 6 – CULTURAL HERITAGE

The objective of this information sheet is to:

- summarise the status and the key findings of the cultural heritage investigations to date; and
- invite feedback on the draft environment effects statement (EES) scoping requirements relating to cultural heritage.

## Status of study program

Study	Consultant	Status
Aboriginal cultural heritage management plan	GHD	Ongoing
Historical cultural heritage impact assessment	GHD	Commencing

Baseline studies have been undertaken to identify potential sites of Aboriginal and historic heritage within the cultural heritage study area (Figure 1) as well as within potential offsite corridors. A desktop assessment in December 2018 included place patterning and predictive modelling of Aboriginal cultural heritage. The results of the modelling were verified through field surveys (known as standard assessment) in February 2019, April 2019 and January 2020. It is proposed that areas with high potential to contain Aboriginal cultural heritage items will be further assessed through sub-surface investigations.

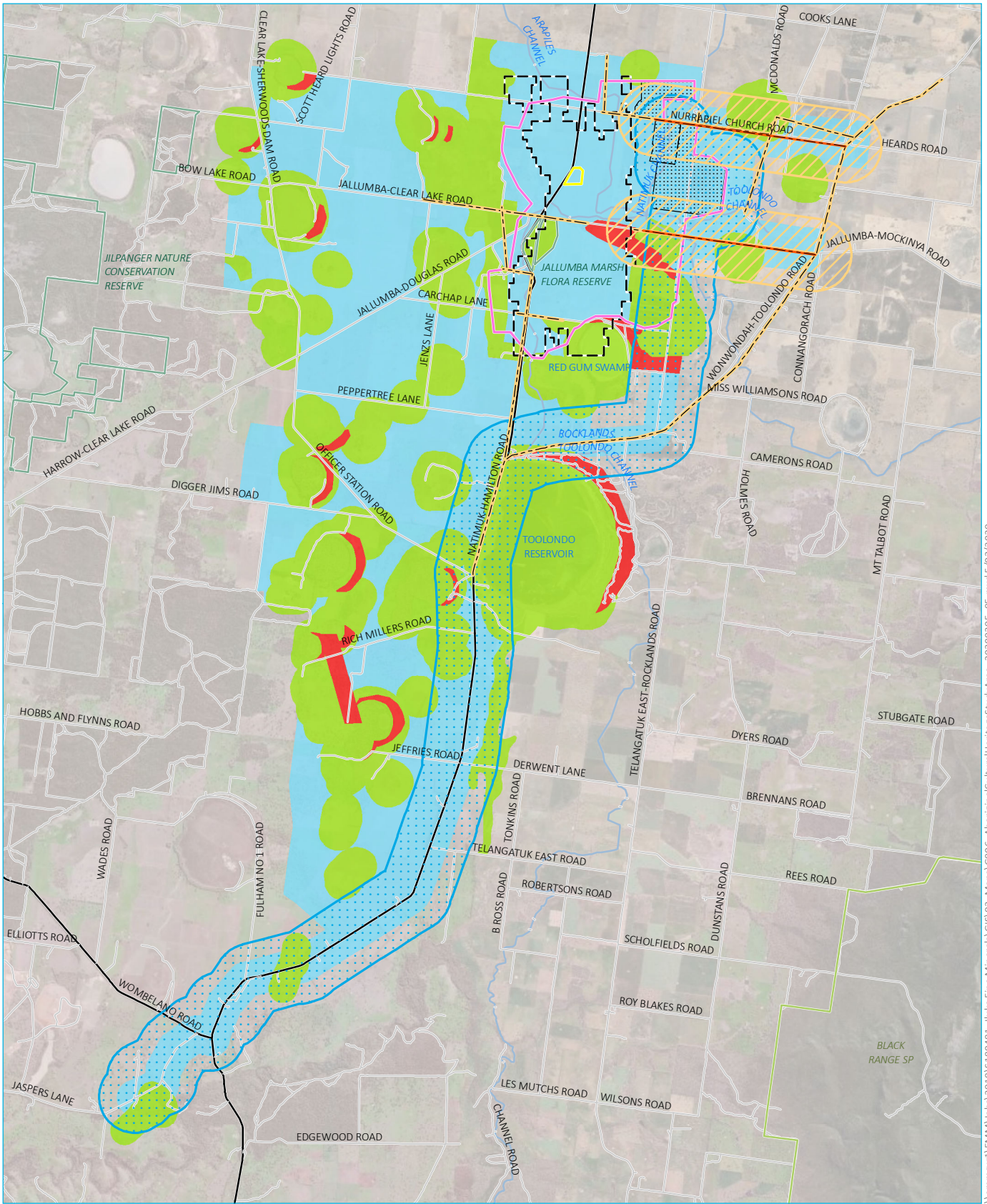
## Key findings to date

### Aboriginal cultural heritage

Prior to European settlement the region was occupied by Wotjobaluk, Jaadwa, Jadawadjali, Wergaia and Jupagulk traditional owner groups. These groups are represented by the Barengi Gadjin Land Council (BGLC) Aboriginal Corporation, the registered Aboriginal party (RAP) under the Victorian *Aboriginal Heritage Act 2006*.

Iluka is working closely with BGLC and Aboriginal cultural heritage consultants, GHD, to assess Aboriginal cultural heritage values in the mine layout development envelope and surrounds. Aboriginal cultural heritage in the study area can be characterised as follows:

- There are no Aboriginal heritage values registered on the World Heritage List, National Heritage List or the Commonwealth Heritage List within the study area.
- There are no items on the Horsham Planning Scheme heritage overlays within the mine development envelope or immediate surrounds relating to Aboriginal cultural heritage.
- The lunette dune fringing the north-western, northern and north-eastern sides of Red Gum Swamp is a culturally significant area (Figure 1). This area contains recorded sites artefacts including ancestral human remains, hearths and stone tools. The Project has been designed to avoid impacts to this area.
- The lunette dune fringing the northern side of the former Jallumba Marsh is also a culturally significant area; predictive modelling indicates a high potential for cultural heritage sites and/or artefacts to be present, including ancestral human remains may be present. Further investigations of this area are proposed (through sub-surface assessment).
- No recorded Aboriginal cultural heritage sites were identified along the offsite pipeline and powerline corridors. Predictive modelling indicates a high potential for cultural heritage sites and artefacts to be present in a small area on the pipeline route on Quick Sinclair Russells Road east of Red Gum Swamp.



Source: EMM (2020); Iluka Resources (2020); GA (2011); Imagery: Iluka Resources (2016)

**KEY**

- |                                  |  |   |
|----------------------------------|--|---|
| Mine layout development envelope | Proposed electricity powerline extension | Aboriginal cultural heritage potential - High     |
| Plant area development envelope  | Existing electricity powerline           | Aboriginal cultural heritage potential - Moderate |
| Indicative mineralised extent    | Major road                               | Aboriginal cultural heritage potential - Low      |
| Test pit site                    | Minor road                               |   |
| Water pipeline study area        | Water channel                            |   |
| Electricity powerline study area |  |   |
| State park                       |  |   |
| Nature conservation reserve      |  |   |

**Cultural heritage study area**

Iluka Resources Limited  
 Technical information sheet 6  
 Cultural heritage  
 Figure 1



\\emmsvr1\EMM\Nobs\2018\180481- Iluka Fine Minerals\GIS\02\_Maps\IG006\_AboriginalCulturalHeritageStudyArea\_20200305\_05.mxd 5/03/2020

Iluka is continuing discussions and investigations with GHD and BGLC as part of the development of the cultural heritage management plan (CHMP) for the Project. The CHMP will identify any potential Project-related impacts on Aboriginal cultural heritage and will outline how to avoid these impacts, and where this is not possible, minimise or manage these impacts.

## Historical heritage

A desktop assessment of the study area was undertaken in December 2018 to identify sites of potential historical heritage. The results indicated there are no significant historical heritage sites recorded within the area. However, potential archaeological remains associated with the former Jallumba railway station/siding, and early homesteads sites (first settlement predominantly occurred in the mid 1800s) will be the subject of further investigations.

Management of any Aboriginal or historical heritage chance finds during investigations and/or mine-related construction works will be in accordance with the Aboriginal Cultural Heritage Management Plan and Historical Heritage Management Plan to be developed for the Project.

## Draft EES scoping requirements

The Victorian Department of Environment, Land, Water and Planning (DELWP) has released the draft EES scoping requirements for the Wimmera Project and is seeking public comment. These scoping requirements will guide the technical assessments that will be undertaken as part of the preparation of the EES for the Wimmera Project.

The draft EES scoping requirements are available here: [www.planning.vic.gov.au/environment-assessment/browse-projects/projects/wimmera-mineral-sands](http://www.planning.vic.gov.au/environment-assessment/browse-projects/projects/wimmera-mineral-sands)



Survey mark on tree located north-east of the Jallumba Marsh Flora Reserve



## HAVE YOUR SAY

Public comments are invited on the draft scoping requirements in relation to matters that should be investigated and documented in the environment effects statement (EES) process for the proposed Wimmera Project.

The draft scoping requirements are open for public comment until midnight on 31 March 2020.

Any comments received will be considered by DELWP during the finalisation of the scoping requirements and will be treated as public documents. Your comments also will be considered by the proponent in the preparation of the EES. Personal details and identifying features (eg names, addresses and contact details) will be removed before your submission is shared with Iluka Resources Limited. You must provide written consent for DELWP to provide your name and address to Iluka Resources Limited.

Comments should be emailed to: [environment.assessment@delwp.vic.gov.au](mailto:environment.assessment@delwp.vic.gov.au)

Written comments can also be posted to:

Impact Assessment Unit, Planning  
Department of Environment, Land, Water and Planning  
PO Box 500, EAST MELBOURNE, VIC 8002

To discuss the draft EES scoping requirements with Iluka or for more information please contact Iluka:

Phone: 1800 305 993

Visit: [www.iluka.com/engage/wimmera](http://www.iluka.com/engage/wimmera)

Email: [wimmeraproject@iluka.com](mailto:wimmeraproject@iluka.com)

Drop in: Wimmera community drop-in centre at Horsham Real Estate office  
Tuesdays and Fridays 9.30 am–2.30 pm or by appointment